

**Supplemental Table 1. Characteristics of Inpatients Treated for Acute HF at Hospital Discharge**

Variable	Missing (%)	Overall (n=8291)	No AVD (n=6814)	AS (n=539)	AR (n=659)	MAVD (n=279)	P-value
<b>Characteristics</b>							
EF, %*	1.4%	40 [30, 50]	38 [28, 50]	50 [35, 60]	40 [30, 50]	48 [35, 55]	<0.001
≤40%		4658 (57%)	4008 (60%)	192 (36%)	358 (55%)	100 (38%)	
41-49%		1056 (13%)	864 (13%)	71 (13%)	83 (13%)	38 (14%)	
≥50%		2462 (30%)	1863 (28%)	266 (50%)	207 (32%)	126 (48%)	
Age, years*		70 [60, 78]	68 [59, 77]	77 [71, 83]	73 [63, 80]	76 [68, 82]	<0.001
Sex, female, %*		3088 (37%)	2409 (35%)	277 (51%)	266 (40%)	136 (49%)	<0.001
Heart rate, beats/min*		86 [72, 105]	86 [72, 105]	86 [74, 104]	83 [70, 100]	90 [73, 110]	0.099
Systolic BP, mmHg*		130 [110, 150]	130 [110, 150]	130 [113, 150]	130 [115, 150]	130 [115, 150]	0.824
NYHA class, %*	0.4%						<0.001
II		1727 (21%)	1443 (21%)	80 (15%)	149 (23%)	55 (20%)	
III		4015 (49%)	3302 (49%)	263 (49%)	329 (50%)	121 (43%)	
IV		2515 (31%)	2037 (30%)	196 (36%)	179 (27%)	103 (37%)	
HF diagnosis >12 months, %*	8.2%	2330 (31%)	1857 (30%)	159 (32%)	226 (38%)	88 (34%)	<0.001
Previous HFH, %*	0.3%	2793 (34%)	2280 (34%)	187 (35%)	225 (34%)	101 (36%)	0.760
Geographic region, %							<0.001
Eastern		4432 (54%)	3567 (52%)	239 (44%)	446 (68%)	180 (65%)	
Northern		364 (4.4%)	291 (4.3%)	20 (3.7%)	44 (6.7%)	9 (3.2%)	
Southern		1721 (21%)	1360 (20%)	201 (37%)	88 (13%)	72 (26%)	
Western		306 (3.7%)	260 (3.8%)	23 (4.3%)	19 (2.9%)	4 (1.4%)	
Middle East		211 (2.5%)	186 (2.7%)	20 (3.7%)	5 (0.8%)	0 (0%)	
North Africa		1091 (13%)	1004 (15)	24 (4.5%)	51 (7.7%)	12 (4.3%)	
Other		166 (2.0%)	146 (2.1%)	12 (2.2%)	6 (0.9%)	2 (0.7%)	
Primary etiology, %	0.1%						<0.001
IHD		4818 (58%)	4116 (61%)	239 (44%)	322 (49%)	141 (51%)	

Hypertension		636 (7.7%)	547 (8.0%)	30 (5.6%)	45 (6.8%)	14 (5.0%)	
Dilated cardiomyopathy		1107 (13%)	975 (14%)	25 (4.6%)	94 (14%)	13 (4.7%)	
Valve disease		990 (12%)	495 (7.3%)	226 (42%)	168 (26%)	101 (36%)	
Other		731 (8.8%)	672 (9.9%)	19 (3.5%)	30 (4.6%)	10 (3.6%)	
<b>Comorbidities/conditions, %</b>							
AF/flutter*		3592 (43%)	2863 (42%)	246 (46%)	344 (52%)	139 (50%)	<0.001
DM*		3051 (37%)	2578 (38%)	197 (37%)	181 (28%)	95 (34%)	<0.001
Stroke/TIA*		954 (12%)	726 (11%)	118 (22%)	56 (8.5%)	54 (19%)	<0.001
Peripheral vascular disease*	0.1%	1223 (15%)	945 (14%)	134 (25%)	79 (12%)	65 (23%)	<0.001
CAD*	0.1%	4671 (56%)	3922 (58%)	277 (51%)	333 (51%)	139 (50%)	<0.001
MI		4463 (54%)	3741 (55%)	265 (49%)	323 (49%)	134 (48%)	<0.001
Hypertension	0.1%	5561 (67%)	4559 (67%)	417 (77%)	394 (60%)	191 (69%)	<0.001
COPD*	0.1%	1572 (19%)	1223 (18%)	147 (27%)	122 (19%)	80 (29%)	<0.001
Chronic kidney disease		2005 (24%)	1618 (24%)	143 (27%)	165 (25%)	79 (28%)	0.160
Anemia (hemoglobin <13 g/dL in males, <12 g/dL in females)*	1.6%	3470 (43%)	2780 (42)	260 (49%)	291 (45%)	139 (50%)	<0.001
BMI, kg/m <sup>2</sup> *	0.6%	28 [25, 31]	28 [25, 31]	27 [24, 30]	26 [24, 29]	26 [24, 29]	<0.001
Cancer	0.1%	371 (4.5%)	297 (4.4%)	30 (5.6%)	30 (4.6%)	14 (5.0%)	0.592
Depression	0.1%	597 (7.2%)	439 (6.5%)	78 (15%)	34 (5.2%)	46 (17%)	<0.001
Smoking	0.1%	1469 (18%)	1277 (19%)	61 (11%)	88 (13%)	43 (15%)	<0.001
<b>Intervention, %</b>							
CABG		853 (10%)	738 (11%)	51 (9.5%)	48 (7.3%)	16 (5.7%)	0.002
PCI	0.1%	1702 (21%)	1497 (22%)	80 (15%)	101 (15%)	24 (8.6%)	<0.001
Valvular surgery		482 (5.8%)	373 (5.5%)	42 (7.8%)	49 (7.4%)	18 (6.5%)	0.034
Devices	0.3%						<0.001
PM		512 (6.2%)	401 (5.9%)	51 (9.5%)	43 (6.5%)	17 (6.1%)	
CRT-P		62 (0.7%)	45 (0.7%)	3 (0.6%)	13 (2.0%)	1 (0.4%)	
CRT-D		258 (3.1%)	239 (3.5%)	2 (0.4%)	16 (2.4%)	1 (0.4%)	
ICD		389 (4.7%)	354 (5.2%)	5 (0.9%)	21 (3.2%)	9 (3.2%)	

<b>ECG/Echocardiographic data</b>							
QRS-duration, ms	11%	100 [80, 120]	100 [80, 120]	100 [84, 120]	105 [86, 127]	106 [88, 126]	0.026
QT duration, ms	18%	394 [344, 428]	392 [340, 427]	400 [360, 427]	390 [355, 422]	400 [360, 442]	0.002
LBBB, %	3.5%	1199 (15%)	971 (15%)	73 (14%)	103 (16%)	52 (19%)	0.215
LVEDD, mm	8.0%	58 [52, 65]	58 [52, 65]	54 [47, 60]	60 [52, 67]	56 [51, 63]	<0.001
<b>Laboratory data</b>							
eGFR, mL/min/1,73 m <sup>2</sup> *	1.7%	63% [44, 83]	64 [45, 85]	58 [40, 75]	59 [43, 79]	54 [39, 71]	<0.001
Sodium, mEq/L*	4.9%	139 [136, 141]	139 [136, 141]	139 [136, 141]	139 [136, 141]	138 [135, 141]	0.334
Fasting glucose, mg/dL	11%	110 [92, 148]	110 [92, 150]	113 [95, 151]	101 [87, 127]	108 [89, 138]	<0.001
Hemoglobin, g/dL	1.6%	13 [11, 14]	13 [12, 14]	12 [11, 14]	13 [11, 14]	12 [11, 14]	<0.001
BNP, pg/mL	89%	724 [312, 1391]	685 [294, 1332]	894 [450, 1756]	830 [381, 1684]	950 [440, 1600]	0.028
NT-proBNP, pg/mL	76%	3674 [1617, 8305]	3415 [1524, 7984]	5204 [2409, 11102]	4200 [2111, 9771]	6438 [3000, 10119]	<0.001
<b>Medications, %</b>							
RAASi/ARNi		5050 (61%)	4174 (61%)	307 (57%)	401 (61%)	168 (60%)	0.284
Beta blockers		6400 (77%)	5315 (78%)	378 (70%)	508 (77%)	199 (71%)	<0.001
MRA	0.1%	4892 (59%)	4057 (60%)	274 (51%)	390 (59%)	171 (61%)	0.001
Oral diuretics	0.1%	6762 (82%)	5551 (82%)	441 (82%)	548 (83%)	222 (80%)	0.596
Ivabradine		299 (3.6%)	266 (3.9%)	13 (2.4%)	15 (2.3%)	5 (1.8%)	0.019
Digitalis		2091 (25%)	1688 (25%)	124 (23%)	197 (30%)	82 (29%)	0.007
Anticoagulants		4836 (58%)	3899 (57%)	320 (59%)	428 (65%)	189 (68%)	<0.001
* Included in the multiple imputation models and logistic/Cox regressions.							
Abbreviations: AVD = aortic valve disease; AR = aortic regurgitation; AS = aortic stenosis; MAVD = mixed aortic valve disease; EF = ejection fraction; BP = blood pressure; NYHA = New York Heart Association Functional Classification; HFH = heart failure hospitalization; AF = atrial fibrillation; DM = diabetes mellitus; TIA = transient ischemic attack; CAD = coronary artery disease; MI = myocardial infarction; COPD = chronic obstructive pulmonary disease; BMI = body mass index; CABG = coronary artery bypass graft; PCI = percutaneous coronary intervention; PM = pacemaker; CRT = cardiac resynchronization therapy; ICD = implantable cardioverter-defibrillator; IHD = ischemic heart disease; ECG = electrocardiogram; LBBB = left bundle branch block; LVEDD = left ventricular end-diastolic diameter; eGFR = estimated glomerular filtration rate; BNP = brain natriuretic peptide; NT-proBNP = N-terminal proBNP; RAAS = renin-angiotensin-aldosterone system inhibitors; ARNi = angiotensin receptor-neprilysin inhibitor; MRA = mineralocorticoid receptor antagonists.							

**Supplemental Table 2. Outcomes of excluded and included patients**

<b>Outcome</b>	<b>Excluded</b>	<b>Included</b>	<b>P-value</b>
<b>CV mortality/First HFH</b>	833, 42, 19.9 (18.6-21.3)	2996, 15130, 19.8 (19.1-20.5)	0.400
<b>CV mortality</b>	328, 45, 7.3 (6.68.2)	1037, 163, 6.4 (6.0-6.8)	0.060
<b>First HFH</b>	634, 42, 15.1 (13.9-16.4)	2394, 151, 15.8 (15.2-16.5)	0.900

*Incidence = no events, sum py, rate/100py (95% CI)*

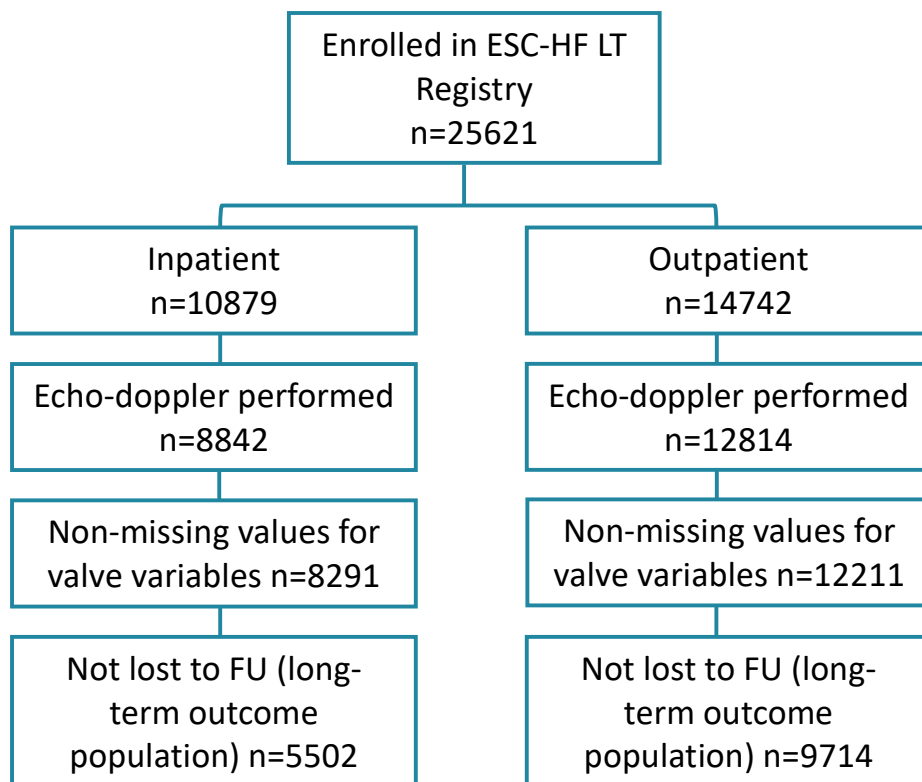
CV=Cardiovascular; HFH= Heart failure hospitalization

**Supplemental Table 3. Outcomes of Patients with AVD in HFpEF, HFmrEF and HFrEF**

	<b>Outcome</b>	<b>Model</b>	<b>No AVD</b>	<b>AS</b>	<b>MAVD</b>	<b>AR</b>
<b>HFpEF</b>	CV mortality or HFH	Incidence rate	389, 2741, 14.2 (12.8-15.7)	72, 212, 33.9 (26.5-42.7)	22, 79, 28.0 (17.5-42.4)	28, 162, 17.3 (11.5-24.9)
		<b>Crude HR (95% CI), p-value</b>	reference	1.67 (1.31-2.12), <0.001	1.84 (1.26-2.67), 0.001	1.24 (0.99-1.54), 0.06
	CV mortality	Incidence rate	118, 2896, 4.1 (3.4-4.9)	34, 240, 14.1 (9.8-19.8)	7, 89, 7.9 (3.2-16.2)	12, 171, 7.0 (3.6-12.2)
		<b>Crude HR (95% CI), p-value</b>	reference	3.44 (2.35-5.05), <0.001	1.96 (0.91-4.20), 0.09	1.72 (0.95-3.11), 0.08
	HFH	Incidence rate	325, 2741, 11.9 (10.6-13.2)	53, 212, 24.9 (18.7-32.6)	16, 79, 20.4 (11.6-33.1)	21, 162, 12.9 (8.0-19.8)
		<b>Crude HR (95% CI), p-value</b>	reference	1.55 (1.17-2.05), 0.002	1.87 (1.24-2.82), 0.003	1.11 (0.86-1.44), 0.41
<b>HFmrEF</b>	CV mortality or HFH	Incidence rate	196, 1787, 11.0 (9.5-12.6)	21, 51, 41.5 (25.7-63.4)	4, 19, 21.2 (5.8-54.2)	19, 105, 18.1 (10.9-28.3)
		<b>Crude HR (95% CI), p-value</b>	reference	1.67 (1.31-2.12), <0.001	1.84 (1.26-2.67), 0.001	1.24 (0.99-1.54), 0.057
	CV mortality	Incidence rate	67, 1862, 3.6 (2.8-4.6)	13, 57, 22.9 (12.2-39.1)	1, 21, 4.8 (0.1-26.8)	9, 110, 8.1 (3.7-15.5)
		<b>Crude HR (95% CI), p-value</b>	reference	6.68 (3.68-12.14), <0.001	1.50 (0.21-10.86), 0.69	2.13 (1.06-4.28), 0.04
	HFH	Incidence rate	155, 1787, 8.7 (7.4-10.2)	15, 51, 29.6 (16.6-48.9)	3, 19, 15.9 (3.3-46.4)	15, 105, 14.3 (8.0-23.6)
		<b>Crude HR (95% CI), p-value</b>	reference	1.55 (1.17-2.05), 0.002	1.87 (1.24-2.82), 0.003	1.11 (0.86-1.44), 0.41
<b>HFrEF</b>	CV mortality or HFH	Incidence rate	1625, 7438, 21.8 (20.8-22.9)	68, 188, 36.1 (28.0-45.8)	28, 71, 39.3 (26.1-56.9)	83, 307, 27.0 (21.5-33.5)
		<b>Crude HR (95% CI), p-value</b>	reference	1.67 (1.31-2.12), <0.001	1.84 (1.26-2.67), 0.001	1.24 (0.99-1.54), 0.06

	CV mortality	Incidence rate	524, 8076, 6.5 (5.9-7.1)	35, 209, 16.8 (11.7-23.3)	9, 79, 11.4 (5.2-21.6)	34, 334, 10.2 (7.0-14.2)
		<b>Crude HR (95% CI), p-value</b>	reference	2.49 (1.77-3.51), <0.001	1.70 (0.88-3.29), 0.12	1.56 (1.10-2.20), 0.01
	HFH	Incidence rate	1330, 7438, 17.9 (16.9-18.9)	51, 188, 27.1 (20.2-35.6)	23, 71, 32.3 (20.5-48.5)	61, 307, 19.9 (15.2-25.5)
		<b>Crude HR (95% CI), p-value</b>	reference	1.55 (1.17-2.05), 0.002	1.87 (1.24-2.82), 0.003	1.11 (0.86-1.44), 0.41

**Supplemental Figure 1. European Society of Cardiology (ESC) Heart Failure Long-term 1-year follow-up flow diagram.**



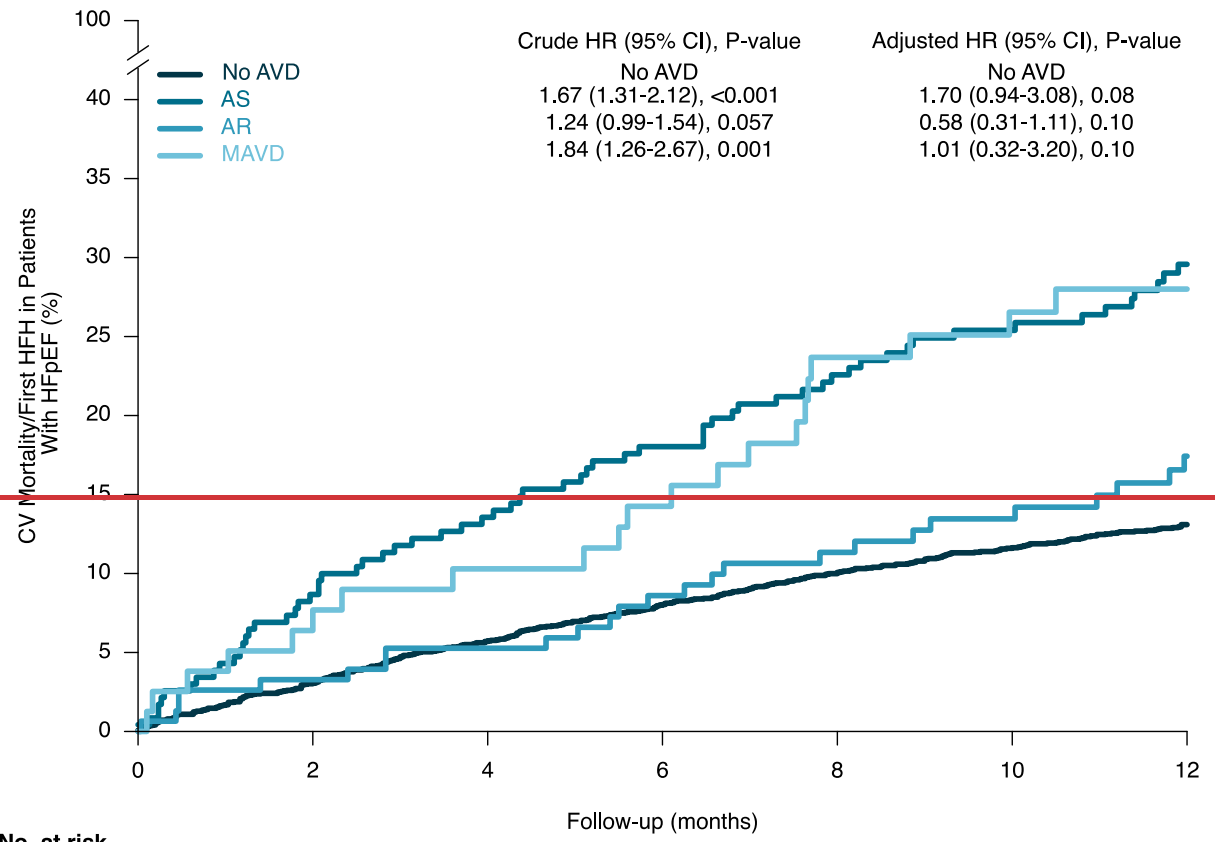
HF = heart failure; Inpatient = acute HF patients; Outpatient = chronic HF patients; FU = follow-up

**Supplemental Figure 2. Kaplan–Meier Time-to-First Event Analyses According to Aortic Valve Disease in Heart Failure Patients According to HFpEF, HFmrEF and HFrEF**

Cardiovascular mortality or heart failure hospitalization; B) Cardiovascular mortality; C) Heart failure hospitalization. CV= cardiovascular; HFH= heart failure hospitalization; CI = confidence interval; HR = hazard ratio; AS = aortic valve stenosis; AR = aortic valve regurgitation; HFmrEF= heart failure with mildly reduced ejection fraction; HFpEF= heart failure with preserved ejection fraction; AS = aortic valve stenosis; AR = aortic valve regurgitation

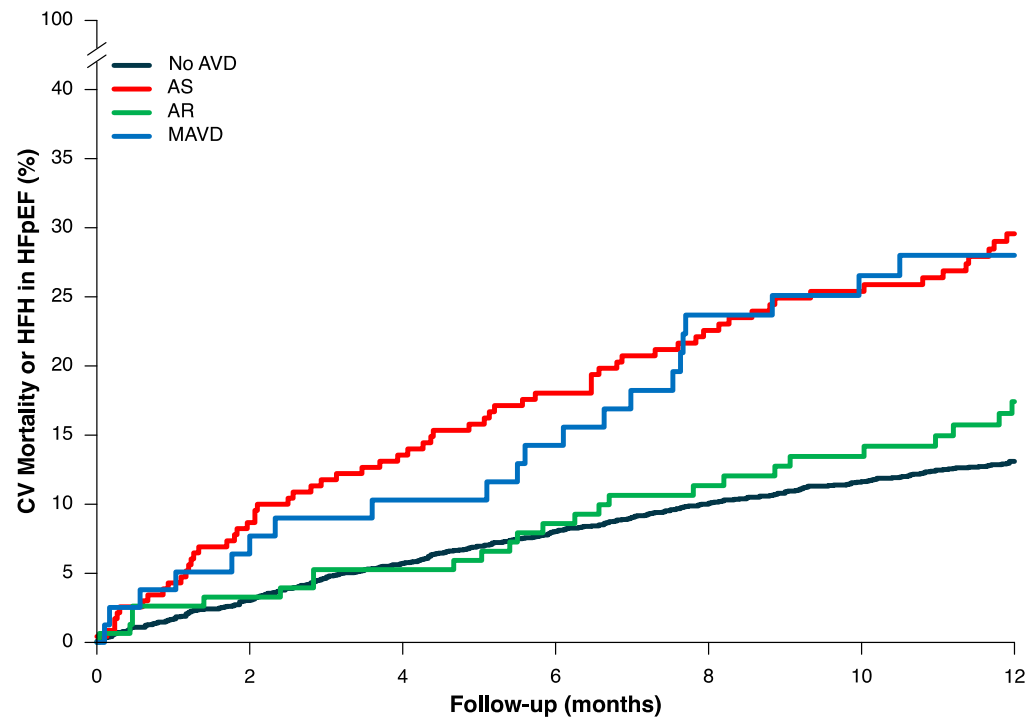
**Figure 2A.**





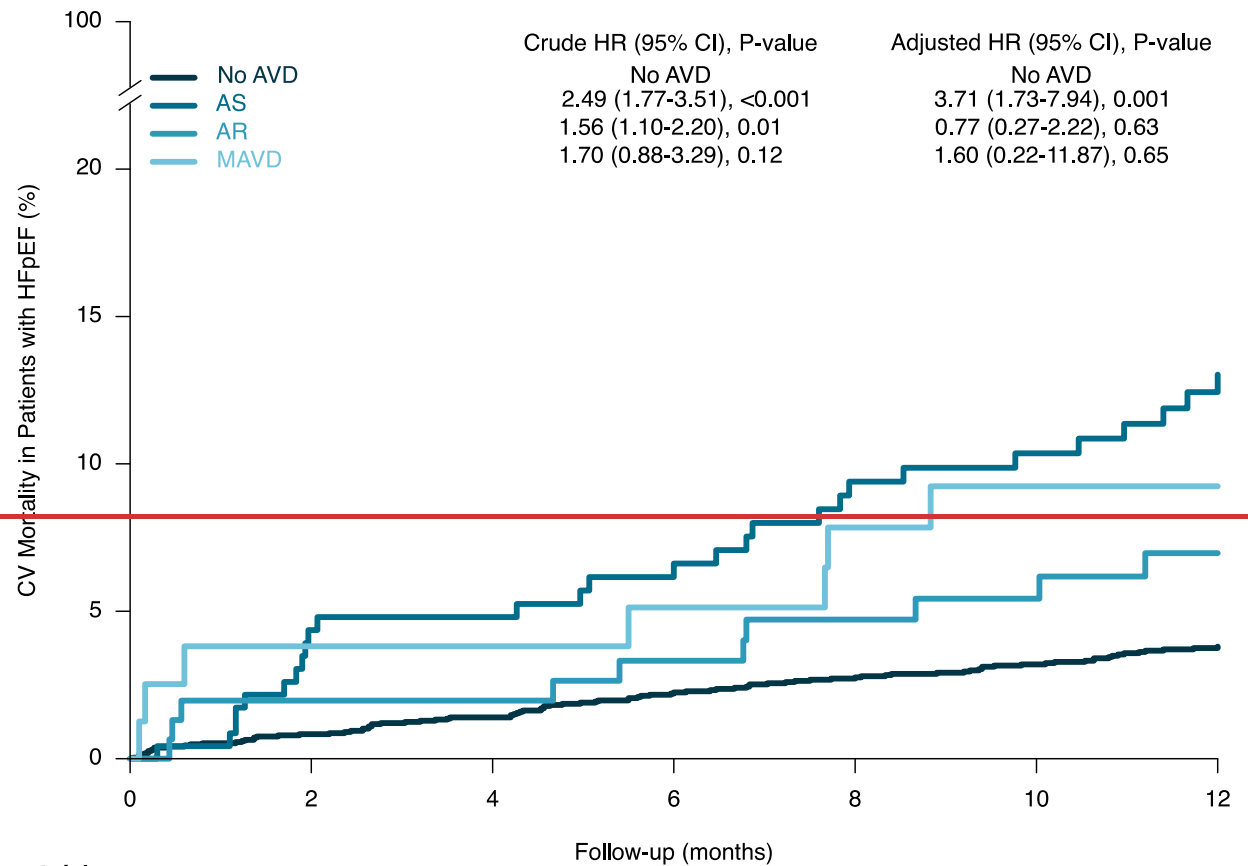
**No. at risk**

	0	2	4	6	8	10	12
No AVD	2654	2552	2463	2378	2280	2160	1786
AS	233	207	194	182	168	152	120
AR	154	147	143	135	126	117	94
MAVD	79	72	68	65	54	50	46

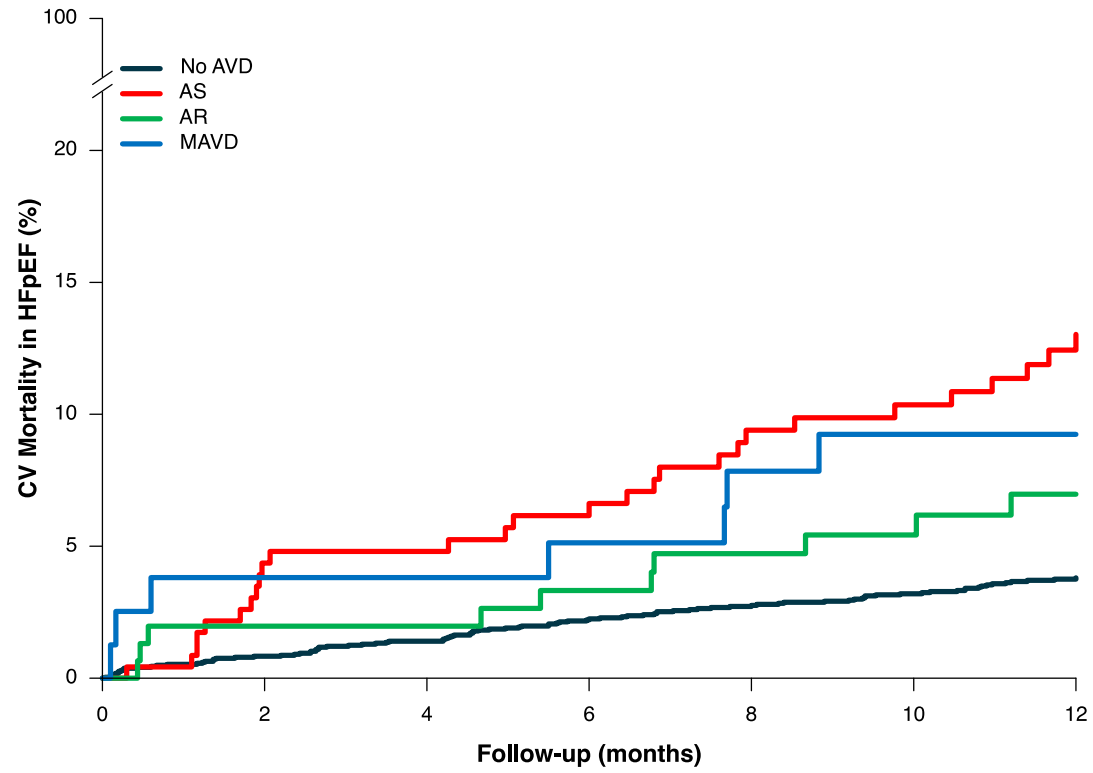


No. at risk							
No AVD	2654	2552	2463	2378	2280	2160	1786
AS	233	207	194	182	168	152	120
AR	154	147	143	135	126	117	94

**Figure 2B**

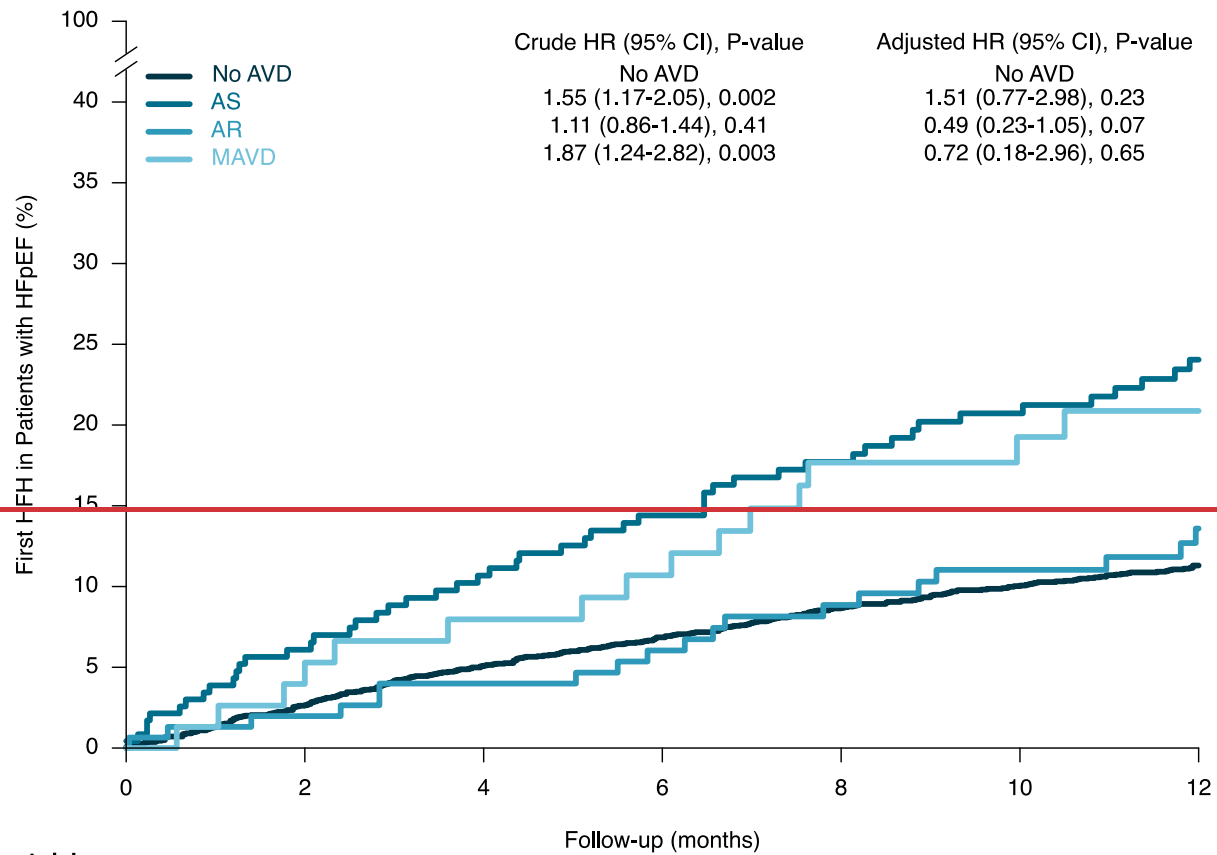


No. at risk								
		0	2	4	6	8	10	12
No AVD	2654	2610	2573	2523	2459	2356	1953	
AS	233	217	213	205	194	182	147	
AR	154	149	147	141	134	126	102	
MAVD	79	74	73	72	66	63	58	

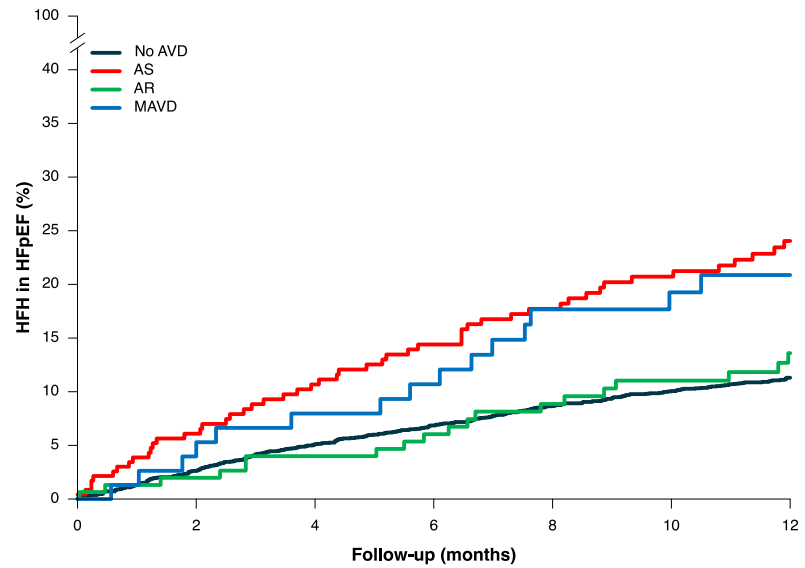


No. at risk							
No AVD	2654	2610	2573	2523	2459	2356	1953
AS	233	217	213	205	194	182	147
AR	154	149	147	141	134	126	102
MAVD	79	74	73	72	66	63	58

**Figure 2C.**



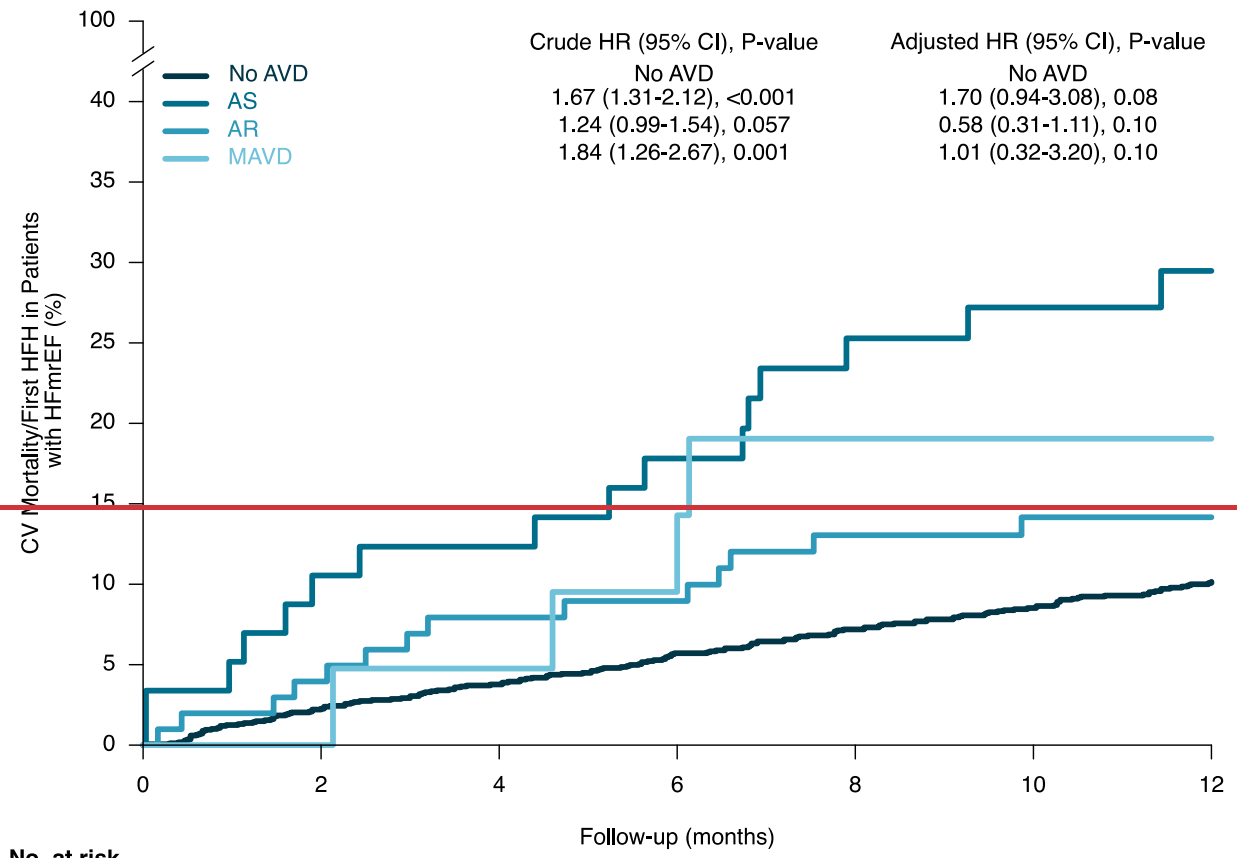
No. at risk		Follow-up (months)						
	0	2	4	6	8	10	12	
No AVD	2654	2552	2463	2378	2280	2160	1786	
AS	233	207	194	182	168	152	120	
AR	154	147	143	135	126	117	94	
MAVD	79	72	68	65	54	50	46	



No. at risk		0	2	4	6	8	10	12
No AVD	2654	2552	2463	2378	2280	2160	1786	
AS	233	207	194	182	168	152	120	
AR	154	147	143	135	126	117	94	
MAVD	79	72	68	65	54	50	46	

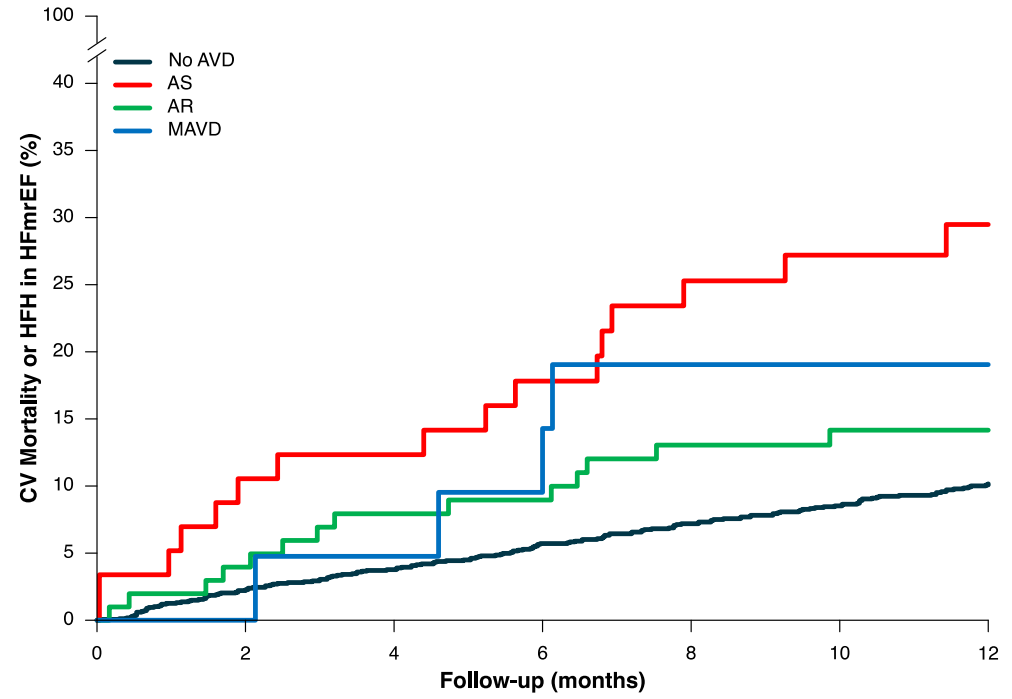


**Figure 2D.**



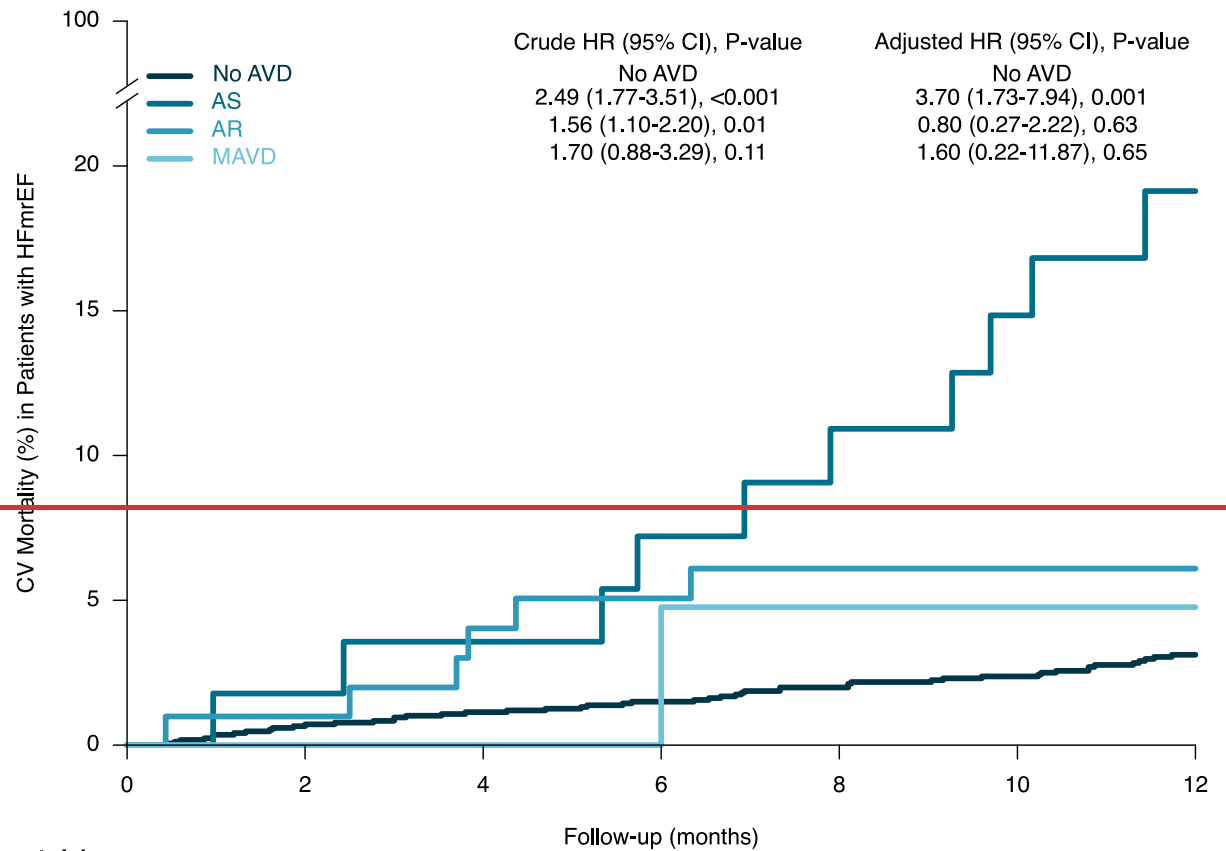
	Crude HR (95% CI), P-value	Adjusted HR (95% CI), P-value
No AVD	1.67 (1.31-2.12), <0.001	1.70 (0.94-3.08), 0.08
AS	1.24 (0.99-1.54), 0.057	0.58 (0.31-1.11), 0.10
MAVD	1.84 (1.26-2.67), 0.001	1.01 (0.32-3.20), 0.10

No. at risk		Follow-up (months)						
	0	2	4	6	8	10	12	
No AVD	1679	1635	1595	1548	1490	1422	1175	
AS	59	50	48	44	40	38	30	
AR	101	97	91	89	84	77	70	
MAVD	22	21	20	19	16	15	14	

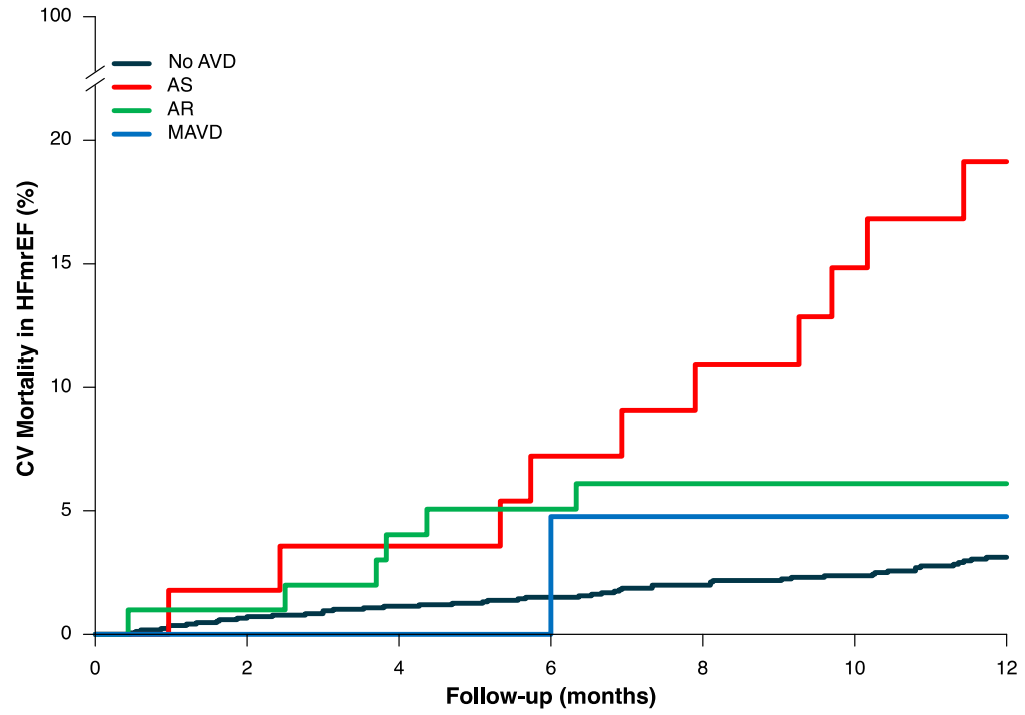


No. at risk		0	2	4	6	8	10	12
No AVD	1679	1635	1595	1548	1490	1422	1175	
AS	59	50	48	44	40	38	30	
AR	101	97	91	89	84	77	70	
MAVD	22	21	20	19	16	15	14	

**Figure 2E.**

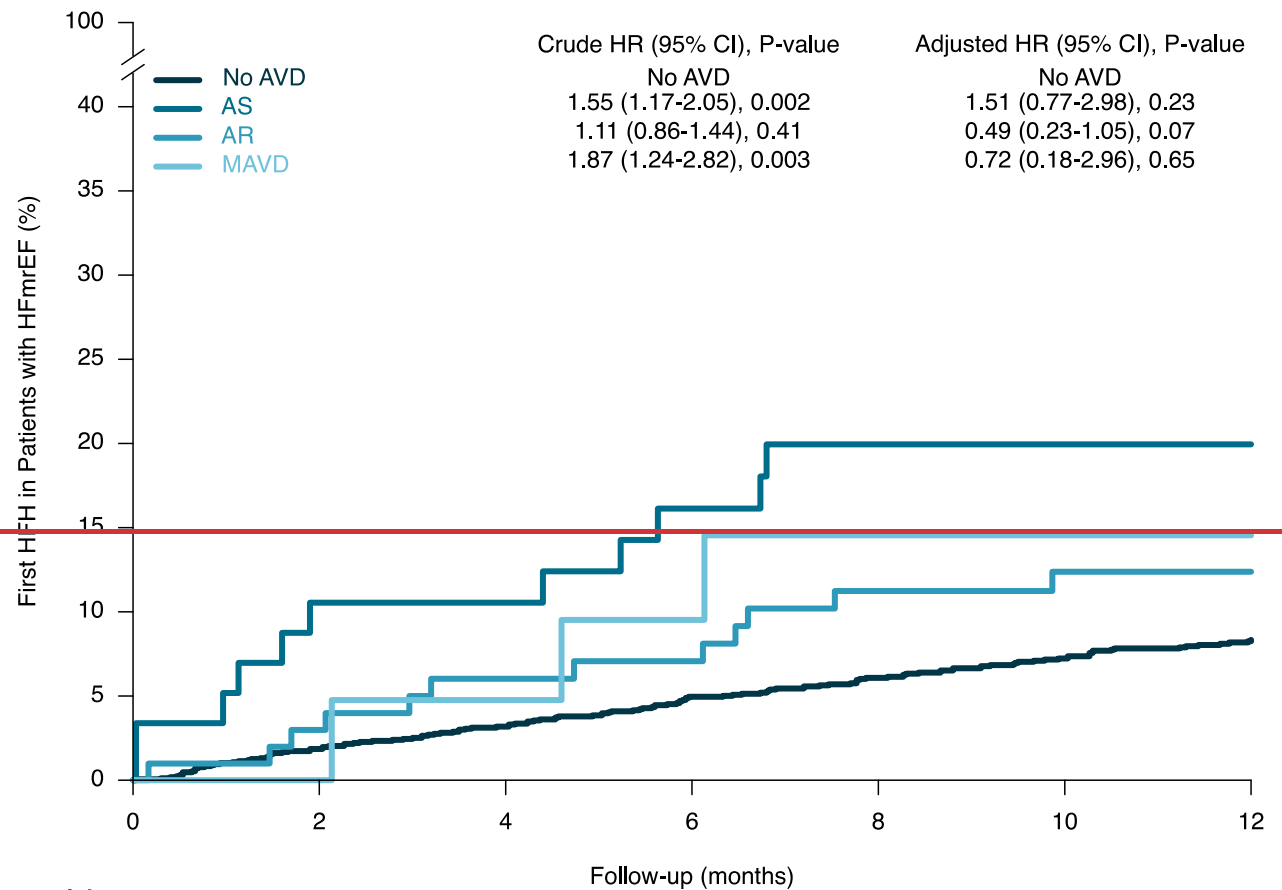


No. at risk		Follow-up (months)						
	0	2	4	6	8	10	12	
No AVD	1679	1660	1638	1617	1573	1516	1251	
AS	59	55	53	50	48	43	34	
AR	101	99	94	92	90	84	74	
MAVD	22	21	21	21	19	18	15	



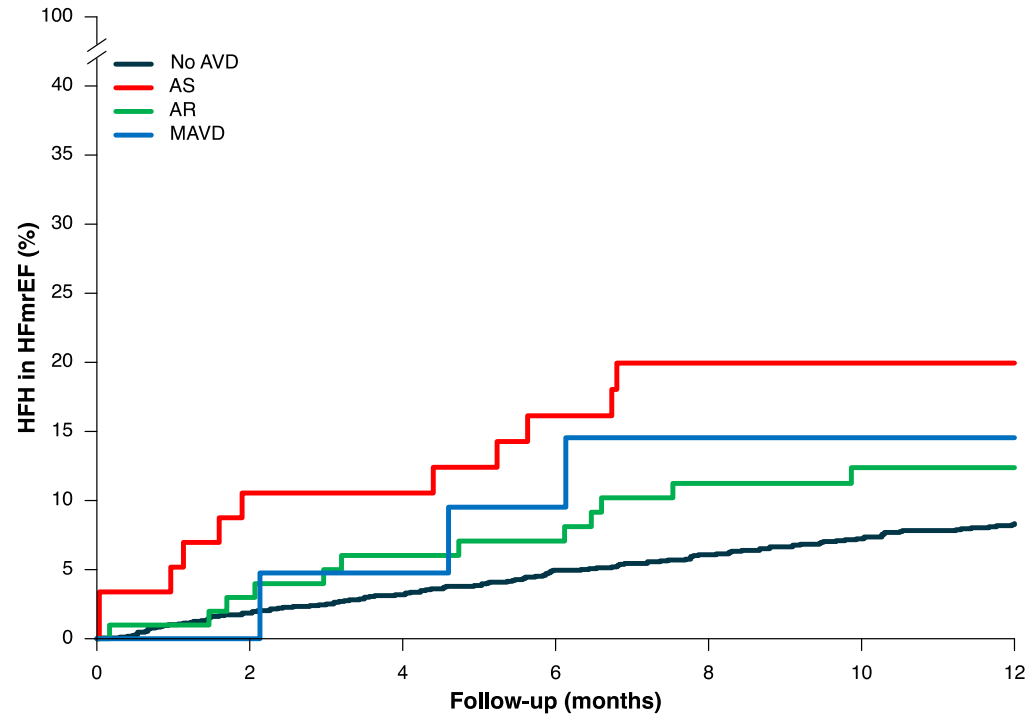
No. at risk							
No AVD	1679	1660	1638	1617	1573	1516	1251
AS	59	55	53	50	48	43	34
AR	101	99	94	92	90	84	74
MAVD	22	21	21	21	19	18	15

| **Figure 2-F.**



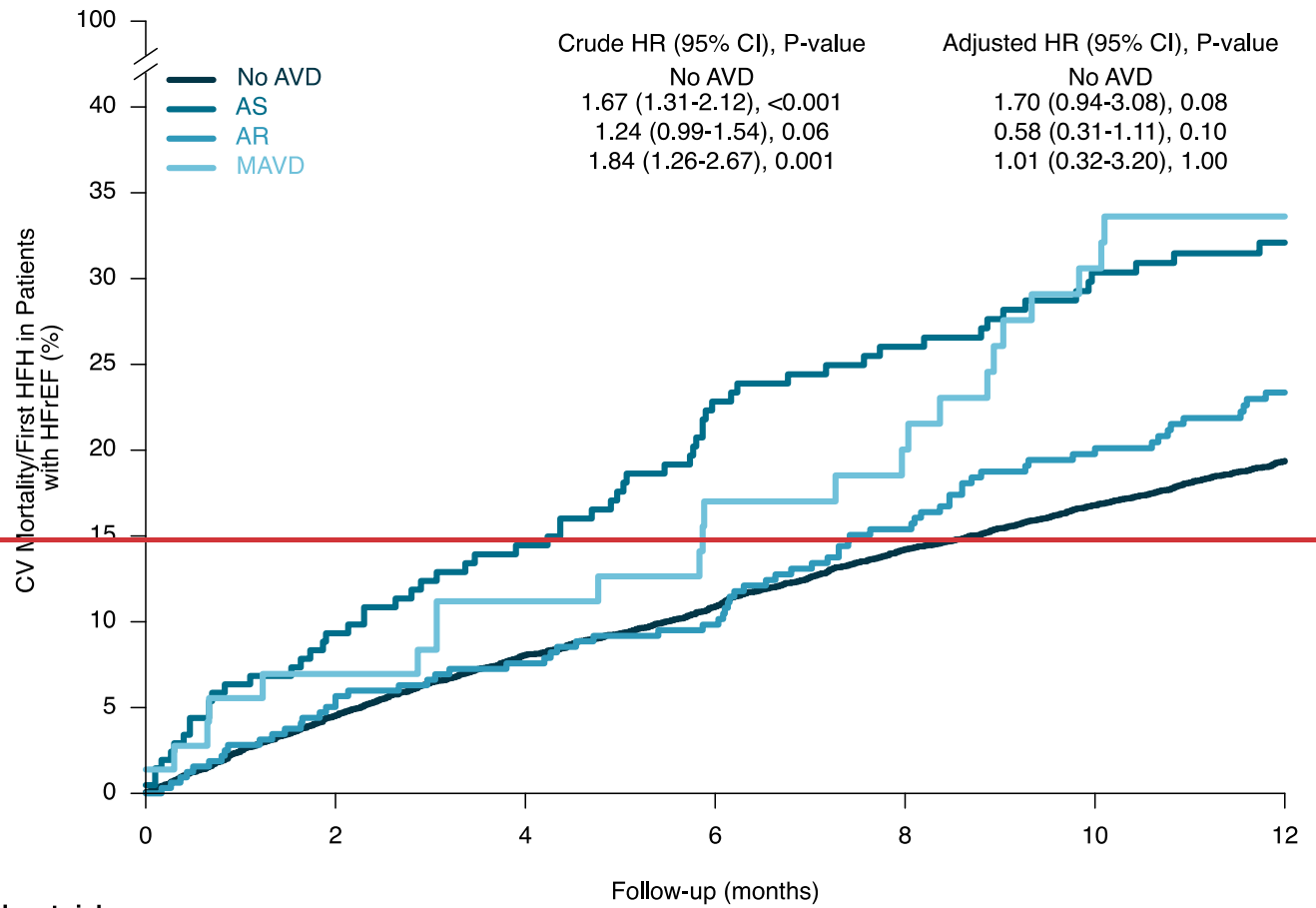
No. at risk	Follow-up (months)						
	0	2	4	6	8	10	12
No AVD	1679	1635	1595	1548	1490	1422	1175
AS	59	50	48	44	40	38	30
AR	101	97	91	89	84	77	70
MAVD	22	21	20	19	16	15	14





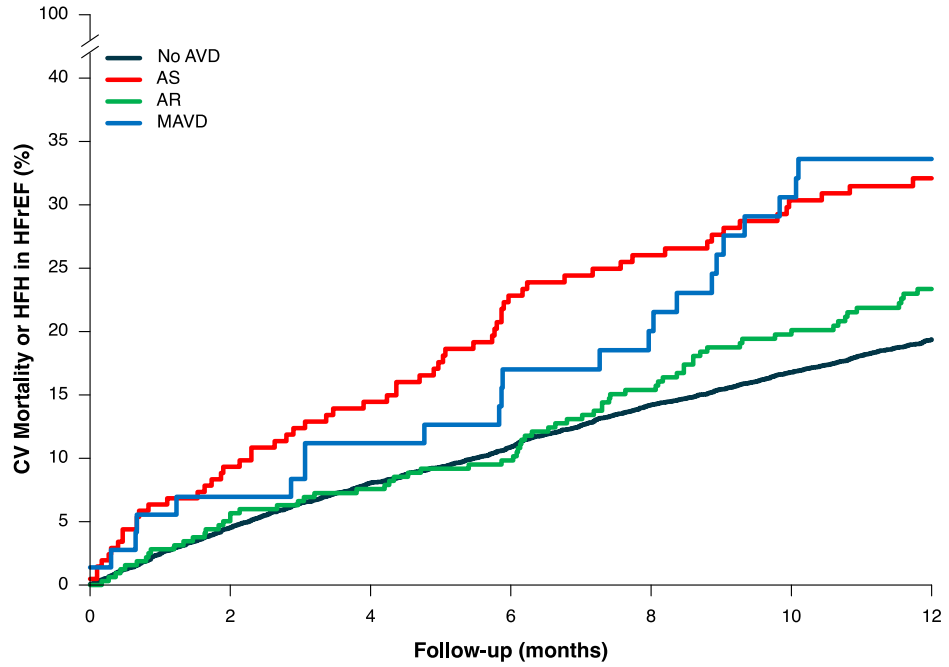
No. at risk							
No AVD	1679	1635	1595	1548	1490	1422	1175
AS	59	50	48	44	40	38	30
AR	101	97	91	89	84	77	70
MAVD	22	21	20	19	16	15	14

**Figure 2G.**



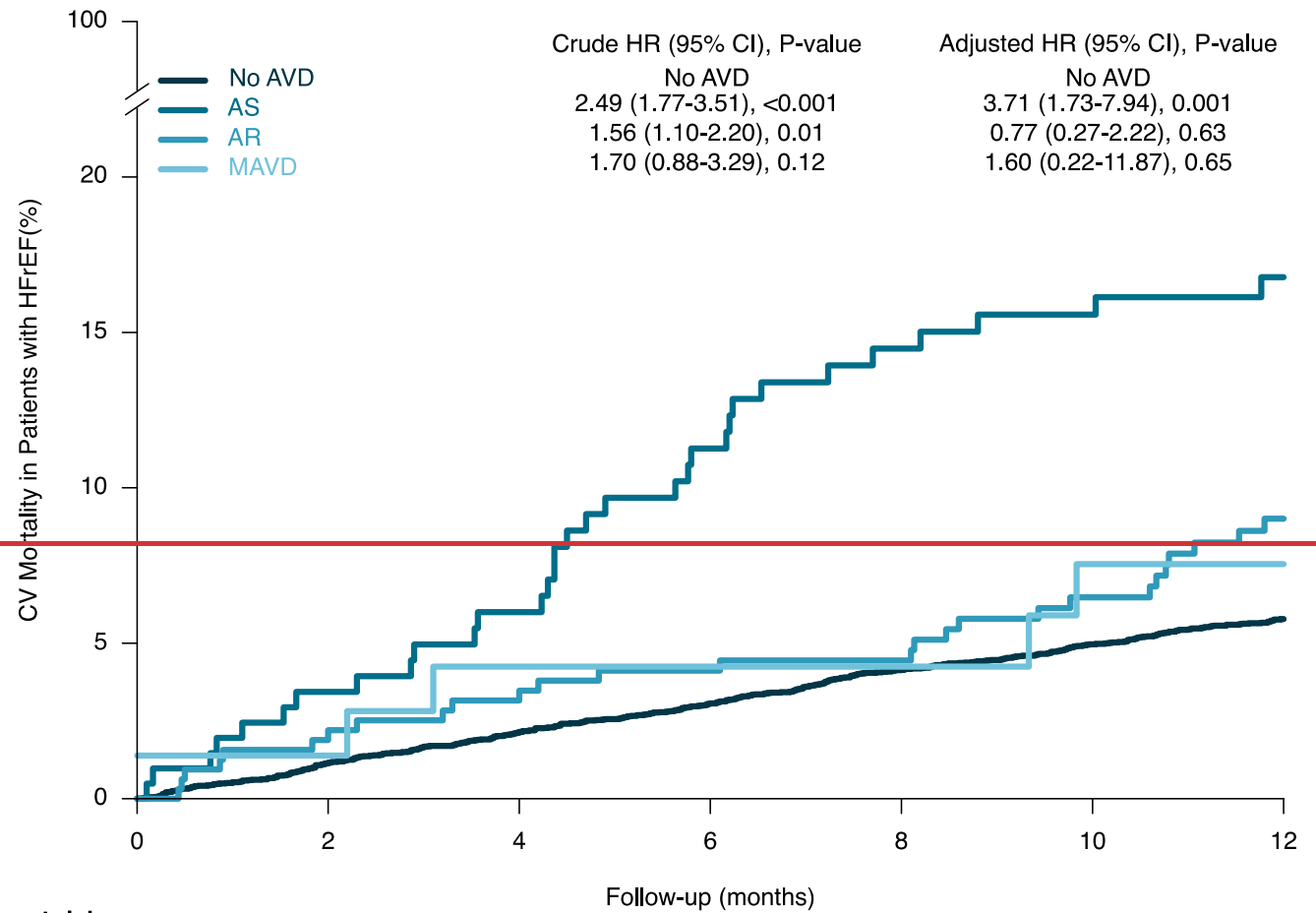
**No. at risk**

	0	2	4	6	8	10	12
No AVD	7699	7297	6960	6673	6293	5873	4663
AS	205	180	165	147	138	128	109
AR	319	300	289	277	255	232	195
MAVD	72	66	62	57	53	46	41



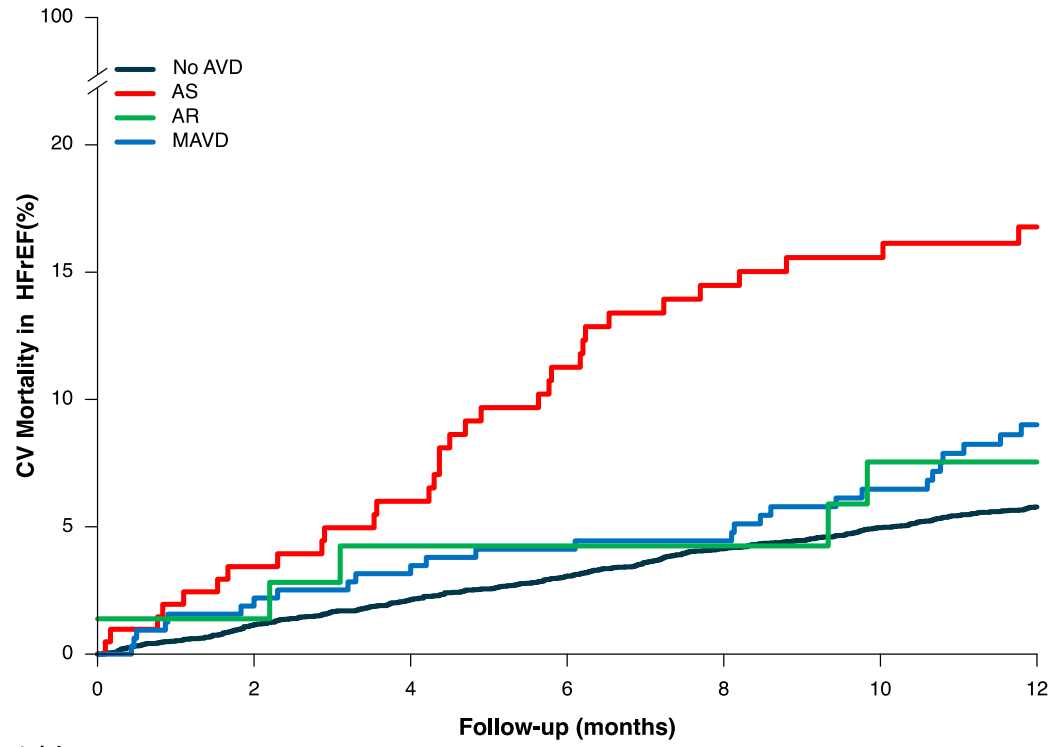
No. at risk								
	0	2	4	6	8	10	12	
No AVD	7699	7297	6960	6673	6293	5873	4663	
AS	205	180	165	147	138	128	109	
AR	319	300	289	277	255	232	195	
MAVD	72	66	62	57	53	46	41	

**Figure 2H.**



**No. at risk**

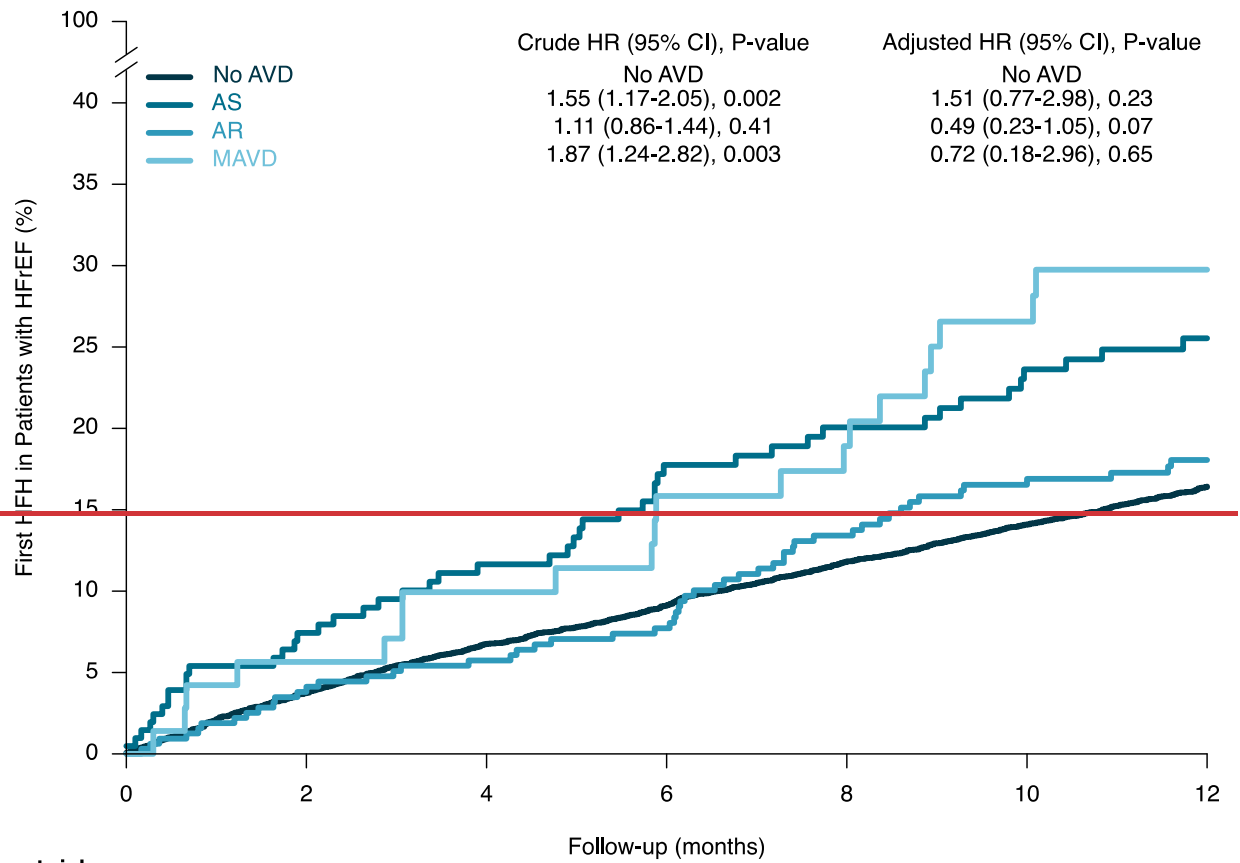
	0	2	4	6	8	10	12
No AVD	7699	7550	7400	7242	7013	6696	5351
AS	205	192	180	167	157	151	128
AR	319	310	303	294	286	270	222
MAVD	72	69	66	64	61	56	49



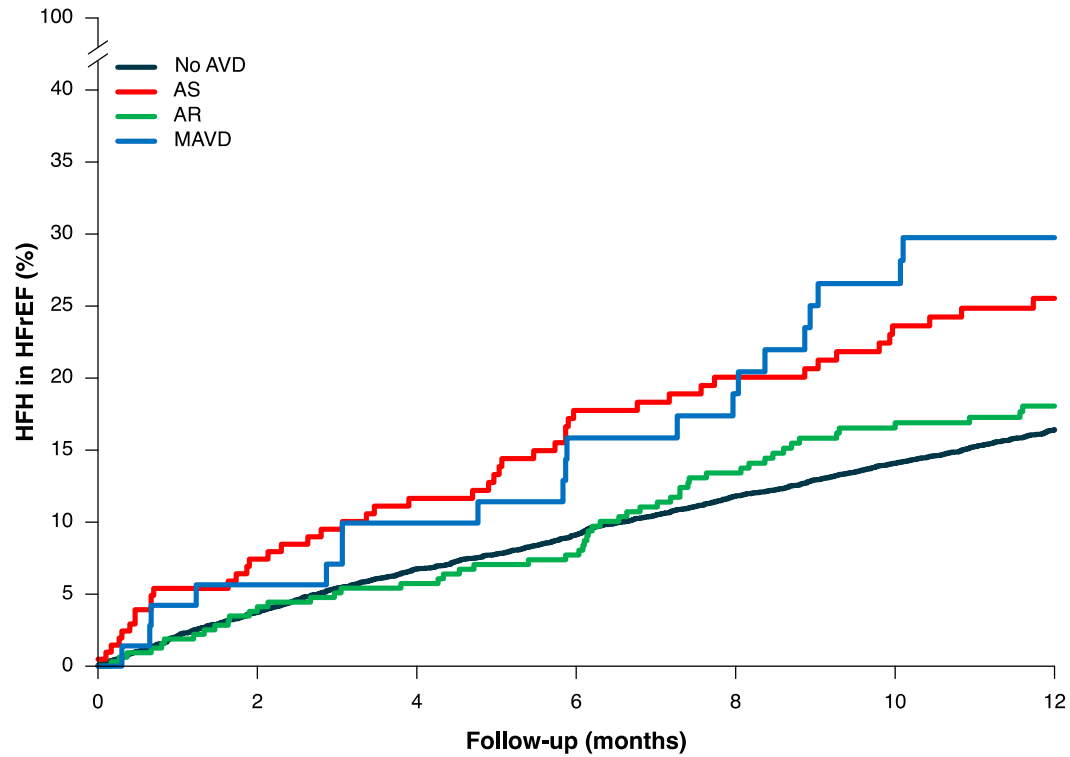
No. at risk							
No AVD	7699	7550	7400	7242	7013	6696	5351
AS	205	192	180	167	157	151	128
AR	319	310	303	294	286	270	222
MAVD	72	69	66	64	61	56	49

**Figure 2I.**





No. at risk		Follow-up (months)						
	0	2	4	6	8	10	12	
No AVD	7699	7297	6960	6673	6293	5873	4663	
AS	205	180	165	147	138	128	109	
AR	319	300	289	277	255	232	195	
MAVD	72	66	62	57	53	46	41	



No. at risk							
No AVD	7699	7297	6960	6673	6293	5873	4663
AS	205	180	165	147	138	128	109
AR	319	300	289	277	255	232	195
MAVD	72	66	62	57	53	46	41

**Supplemental Figure 3. Adjusted Associations Between Patient Characteristics and Type of Aortic Valve disease**

HFmrEF= heart failure with mildly reduced ejection fraction; HFpEF= heart failure with preserved ejection fraction; AS = aortic valve stenosis; AR = aortic valve regurgitation; OR= odds ratio; AS = aortic valve stenosis; AR = aortic valve regurgitation; OR = odds ratio; CI = confidence interval; HR = heart rate; SBP = systolic blood pressure; EF = ejection fraction; NYHA = New York Heart Association; HF = heart failure; HFH = heart failure hospitalization; IHD = ischemic heart disease; LVEDD = left ventricular end-diastolic diameter; COPD =chronic obstructive pulmonary disease; TIA = transient ischemic attach; BMI = body mass index; eGFR = estimated glomerular filtration rate.

**Supplemental Figure 3.**

