

Exploring high-throughput immunoassays for biomarker validation in rheumatic diseases in the context of the Human Proteome Project

Manuel Fuentes^{1,2}, Cristina Ruiz-Romero^{3,4}, Sara Misiego¹, Pablo Juanes-Velasco¹, Alicia Landeira-Viñuela¹, Adrian Torres-Roda¹, Hector Lorenzo-Gil¹, Maria Gonzalez-Gonzalez¹, Ángela P. Hernández^{1,5}, Lucia Lourido³, Ronald Sjöberg⁶, Elisa Pin⁶, Javier de Las Rivas⁷, Jose Manuel Sanchez-Santos⁷, Peter Nilsson⁶ & Francisco J. Blanco^{3,8,*}*

¹ Department of Medicine and General Cytometry Service-Nucleus, Cancer Research Centre (IBMCC/CSIC/USAL/IBSAL), 37007 Salamanca, Spain

² Proteomics Unit. Cancer Research Centre (IBMCC/CSIC/USAL/IBSAL), 37007 Salamanca, Spain

³ Unidad de Proteómica. Grupo de Investigación de Reumatología (GIR), Instituto de Investigación Biomédica de A Coruña (INIBIC), Complejo Hospitalario Universitario de A Coruña (CHUAC), Sergas. C/As Xubias de Arriba 84, 15006, A Coruña, Spain

⁴ Centro de Investigación Biomédica en Red de Bioingeniería, Biomateriales y Nanomedicina (CIBER-BBN), Av. Monforte de Lemos, 3-5. Pabellón 11, 28029, Madrid, Spain

⁵ Department of Pharmaceutical Sciences: Organic Chemistry, Faculty of Pharmacy, University of Salamanca, CIETUS, IBSAL, 37007 Salamanca, Spain

⁶ Dept Protein Science, SciLifeLab, KTH Royal Institute of Technology, Stockholm, Sweden

⁷ Bioinformatics and Functional Genomics Research Group, Cancer Research Centre (IBMCC/CSIC/USAL/IBSAL), 37007 Salamanca, Spain

⁸ Grupo de Investigación de Reumatología y Salud (GIR-S), Departamento de Fisioterapia, Medicina y Ciencias Biomédicas, Centro de investigaciones Avanzadas (CICA), Universidade da Coruña (UDC), 15008, A Coruña, Spain

‡ Corresponding authors:

E-mail: mfuentes@usal.es. Phone: +34 923294811. Fax: +34 923294743

E-mail: Francisco.Blanco.Garcia@sergas.es. Phone: +34 981 17 82 72. Fax: +34 981 17 82 73

Supplementary Figures S1-S8:

Figure S1.- Intensity distribution plot. Panel A.-Raw data. Panel B.-Normalized and standardized data. Each line represents a serum sample.

Figure S2.- Workflow for data analysis of serum screening by affinity proteomics.

Figure S3.-Summary of PubPular datasets. Panel A.-Cluster of highlighted proteins in the database. Panel B.-Count of topic-specific proteins. Panel C.-Distribution of co-publications in database.

Figure S4.- PCA analysis of global of serum protein profiles by affinity proteomics. Panel A.-Pathological vs controls. Panel B.-Controls vs OA, RA, PSA.

Figure S5.-Summary of cluster analysis. Panel A.-Minimal numbers of optimized clusters. Panel B.-Clusters silhouette plot. Panel C.-PCA analysis from patient clusters.

Figure S6.- Correlation plots of differential protein profiles. Panel A.-Profiles OA vs controls. Panel B.-AR vs controls. Panel C.-PSA vs controls.

Figure S7.- Box plots of all the proteins included in the potential panel of biomarkers.

Figure S8.-Evaluation of differential serum protein profiles as potential biomarkers panel for diagnosis. Panel A.-ROC curve for AO vs APS. Panel B.-ROC curve for OA vs AR. Panel C.-ROC curve for APS vs AR.

Supplementary Tables:

Supplementary Table 1: List of antibodies in these arrays.

Supplementary Table 2: Relative abundance protein level in OA vs controls.

Supplementary Table 3: Relative abundance protein level in PSA vs controls.

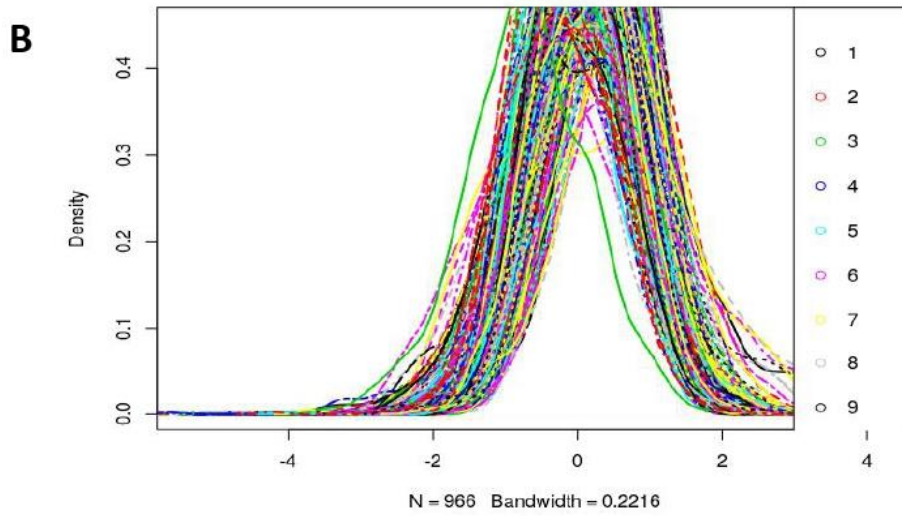
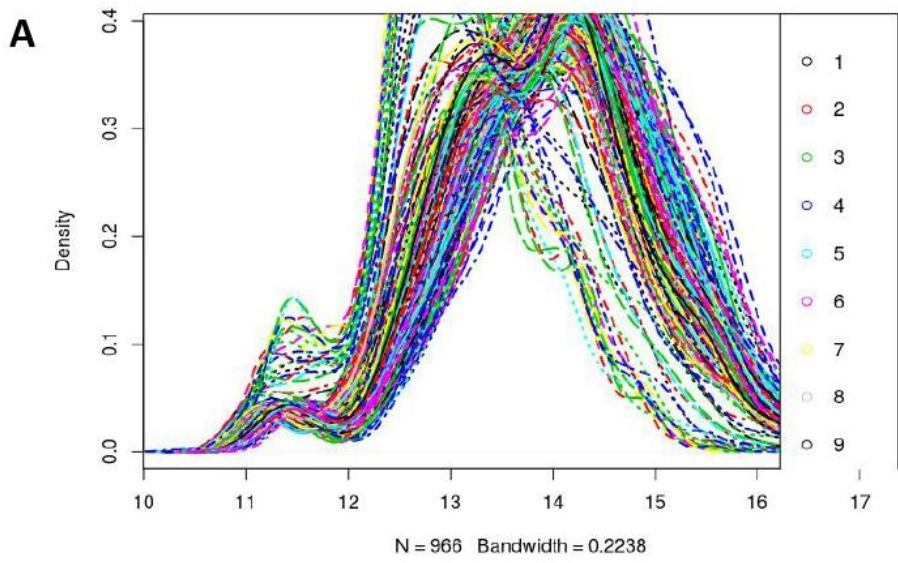
Supplementary Table 4: Relative abundance protein level in RA vs controls.

Supplementary Table 5: Differential protein profiles of significant proteins in each cluster.

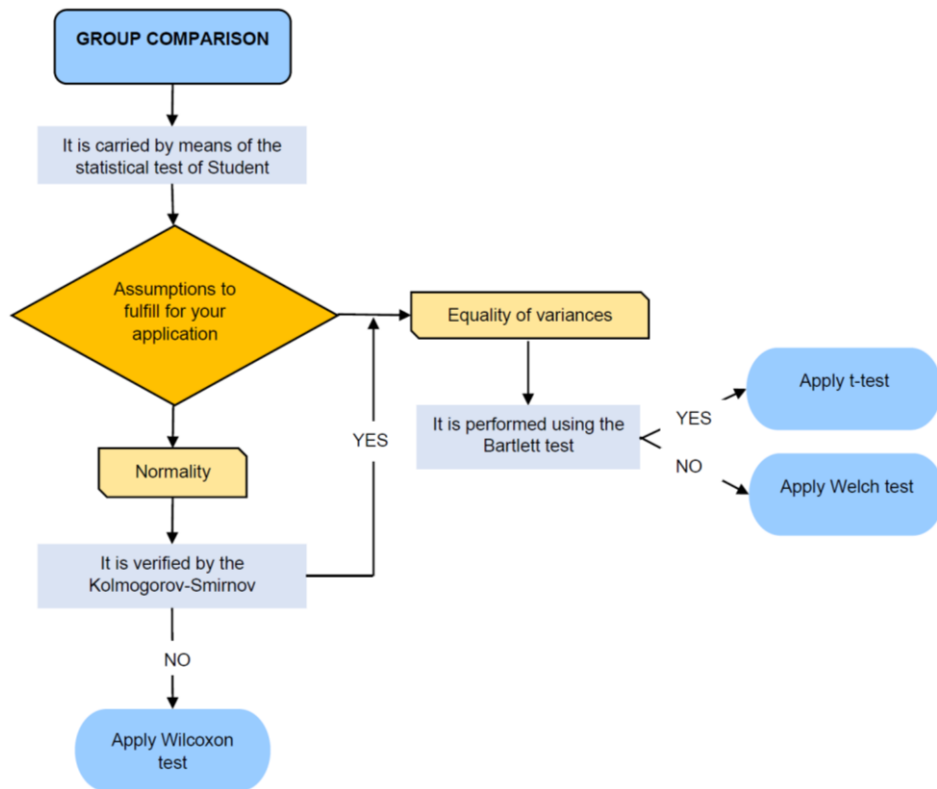
Supplementary Table 6: Parameters of the logistic multinomial regression.

Supplementary Table 7: Differential proteins profiles in each pathological comparisons

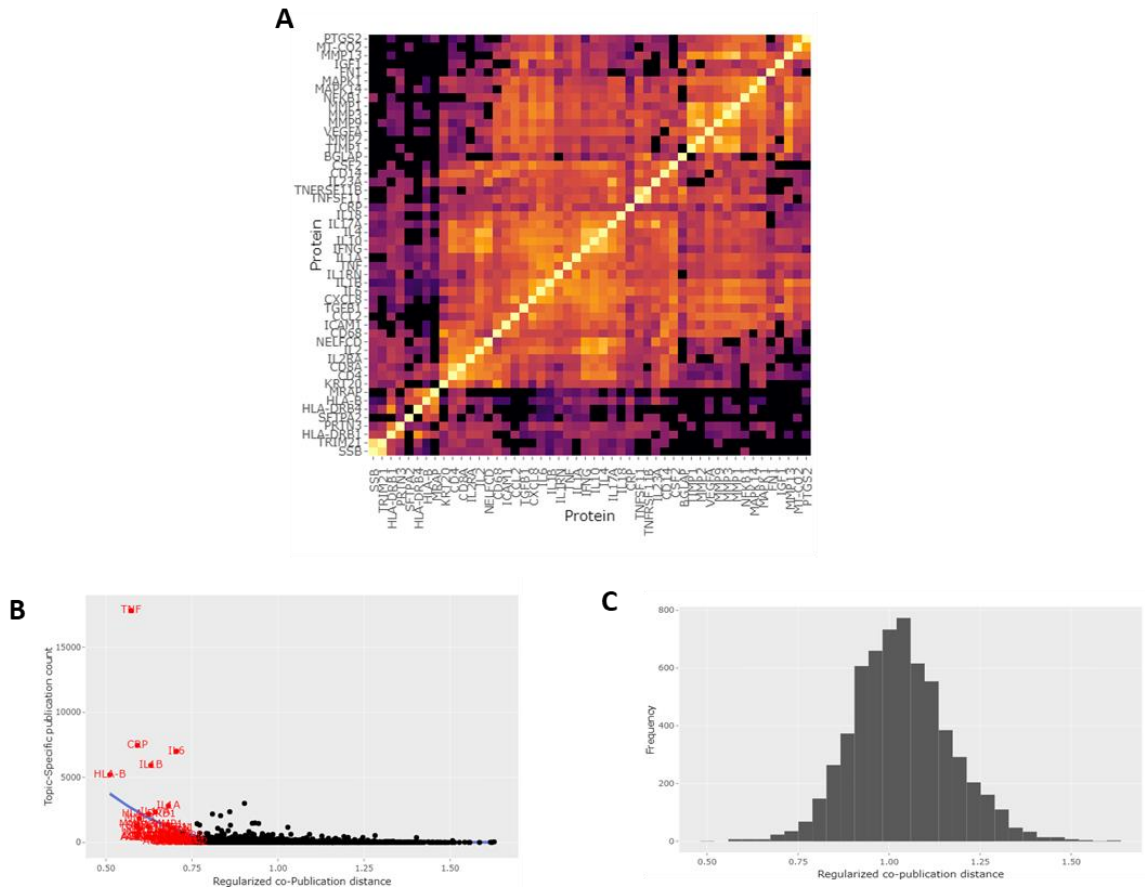
Supplementary Figures



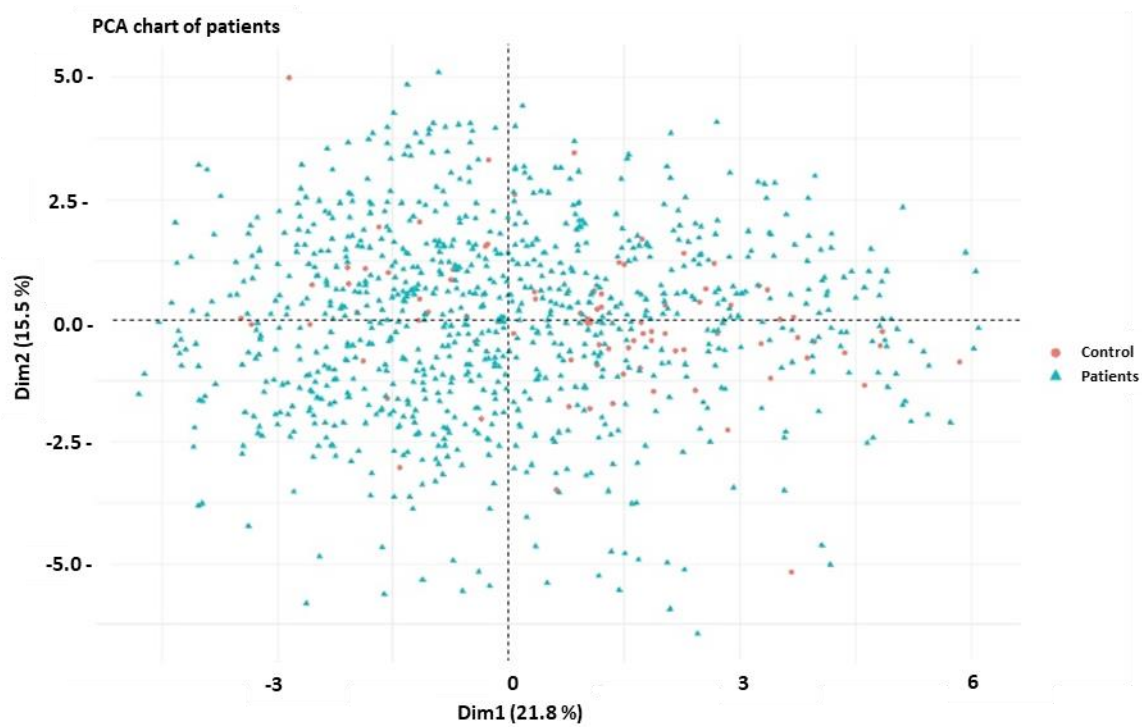
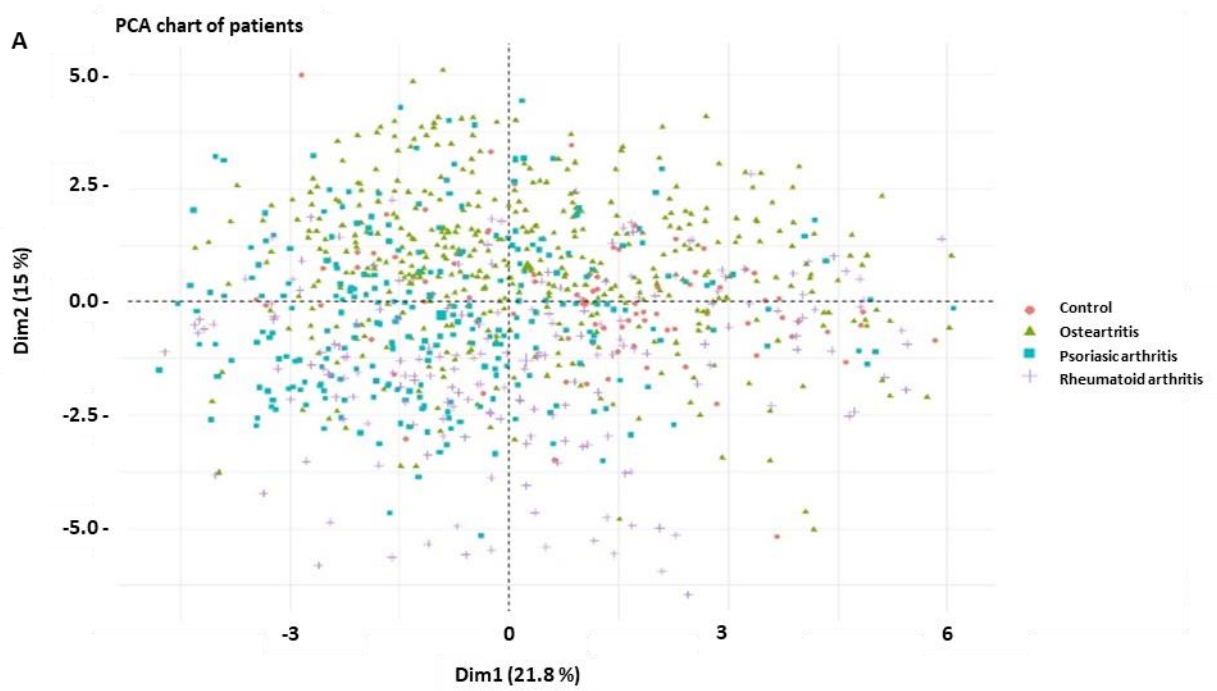
Supplementary Figure 1.-Intensity distribution plot. Panel A.-Raw data. Panel B.-Normalized and standardized data. Each line represents a serum sample.



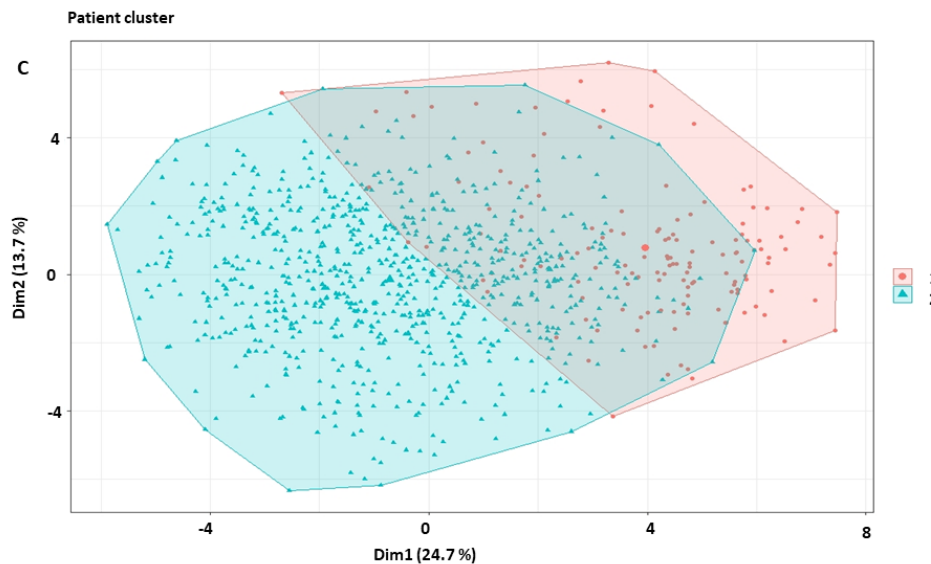
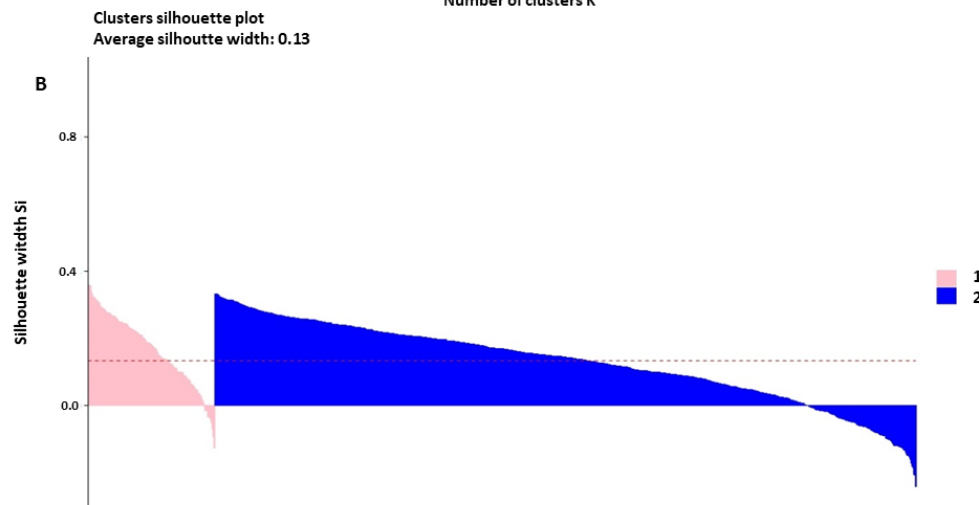
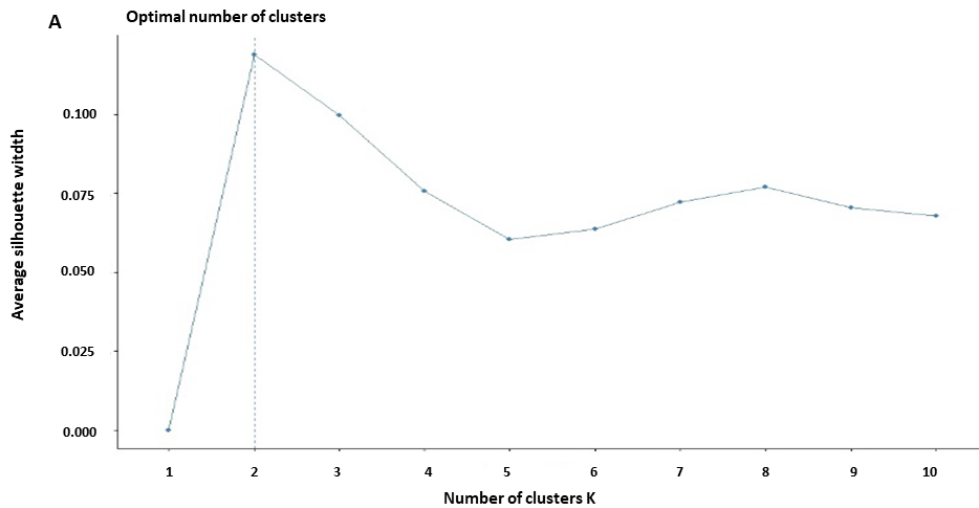
Supplementary Figure 2.-Workflow for data analysis of serum screening by affinity proteomics



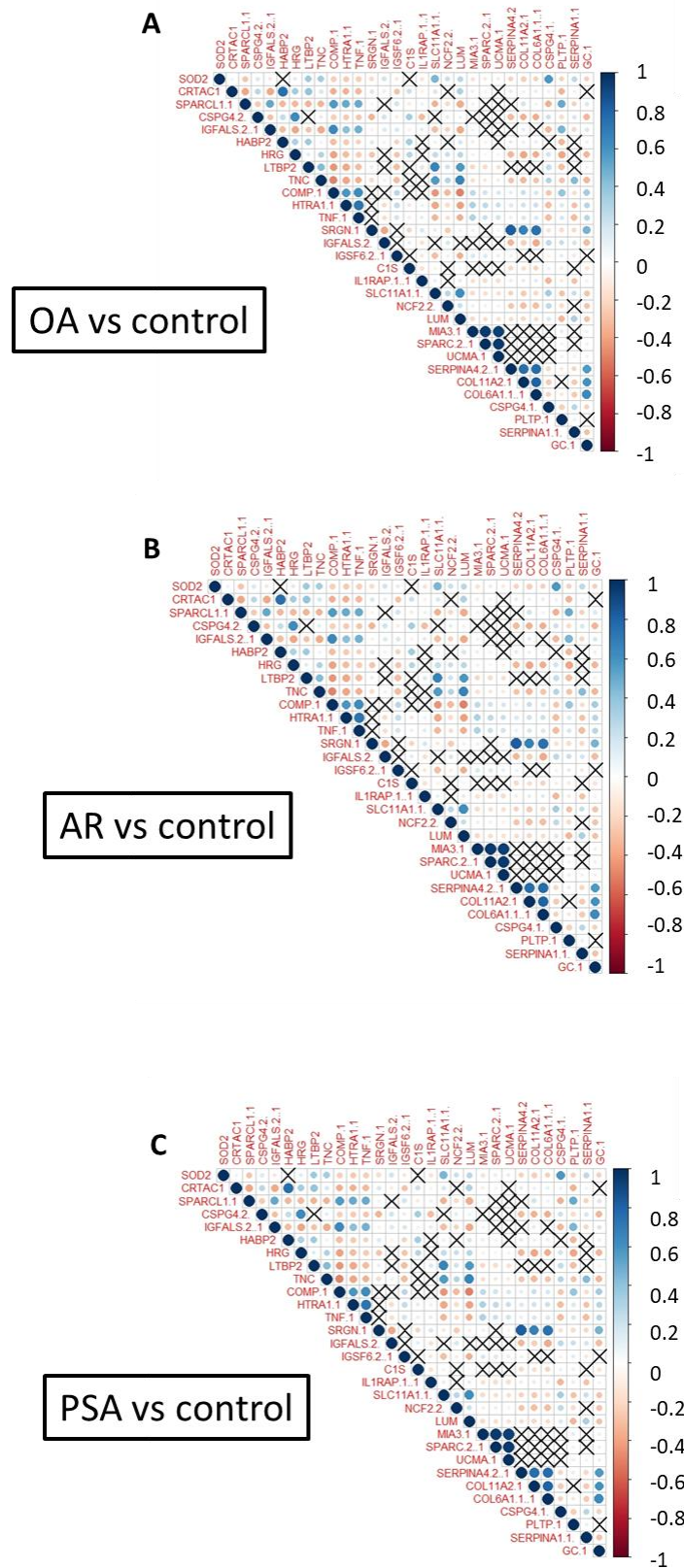
Supplementary Figure 3.-Summary of PubPular datasets. Panel A.-Cluster of highlighted proteins in the database. Panel B.-Count of topic-specific proteins. Panel C.-Distribution of co-publications in database.



Supplementary Figure 4.-PCA analysis of global of serum protein profiles by affinity proteomics. Panel A.-Pathological vs controls. Panel B.-Controls vs OA, RA, PSA.

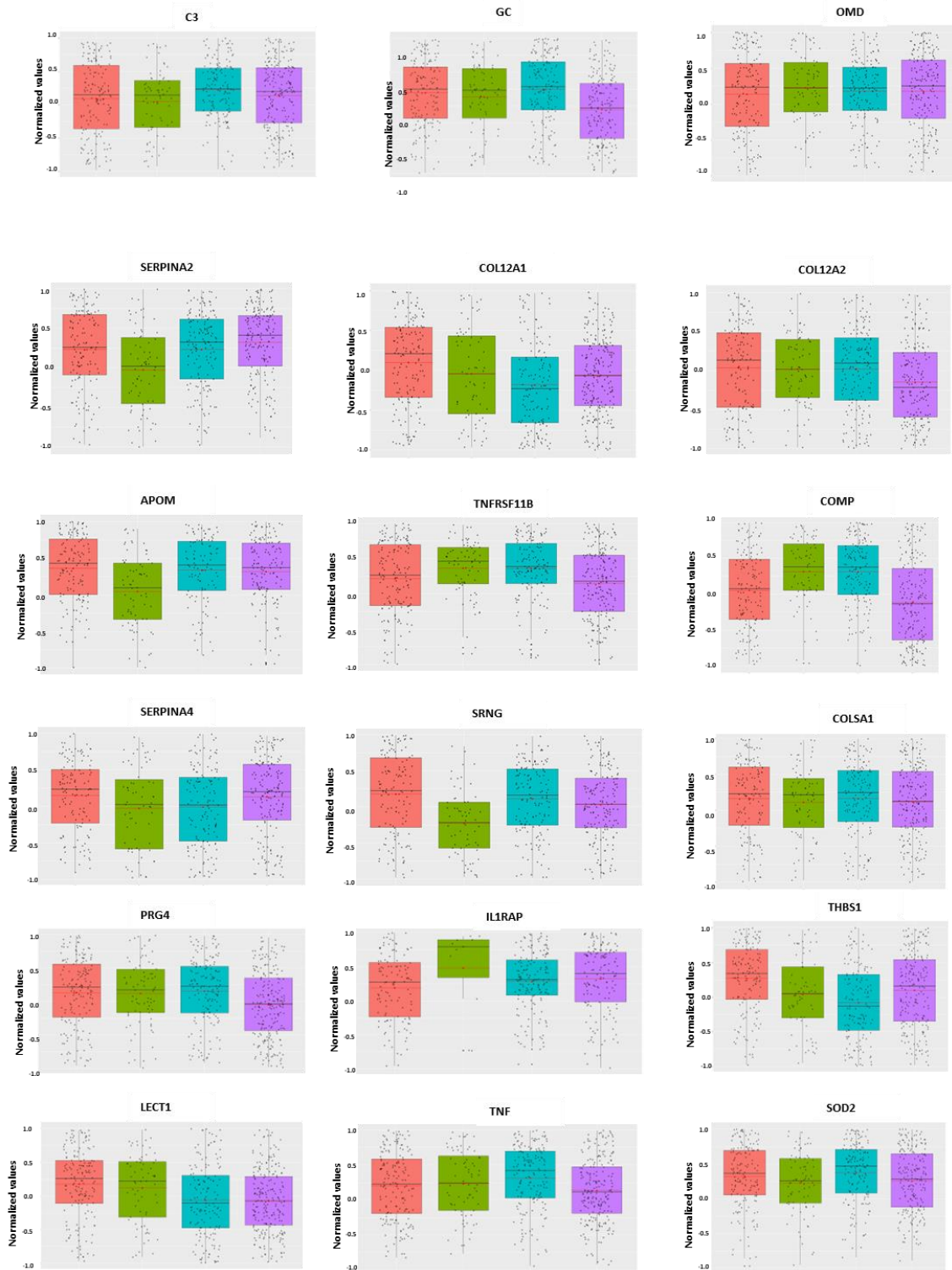


Supplementary Figure 5.-Summary of cluster analysis. Panel A.-Minimal numbers of optimized clusters. Panel B.-Clusters silhouette plot. Panel C.-PCA analysis from patient clusters.



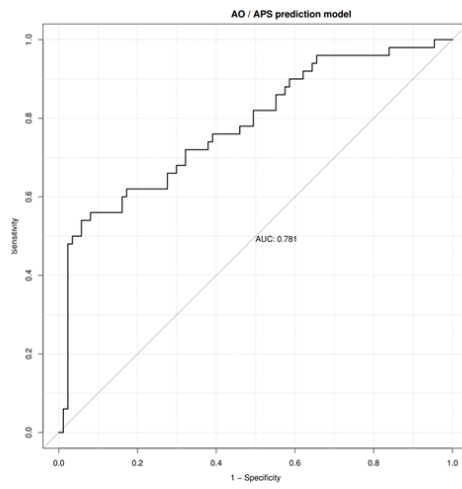
Supplementary Figure 6.-Correlation plots of differential protein profiles. Panel A.-Profiles OA vs controls. Panel B.-AR vs controls. Panel C.-PSA vs controls

AR Control OA PSA

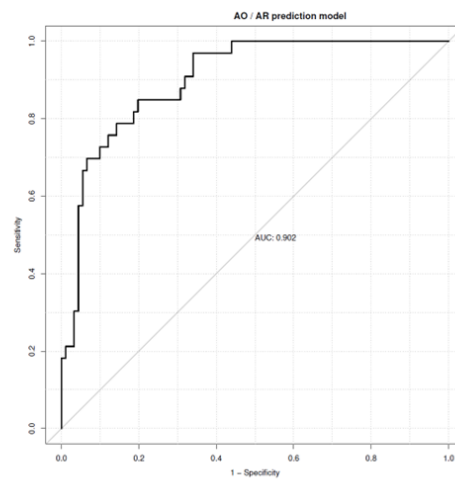


Supplementary Figure 7.-Box plots of all the proteins included in the potential panel of biomarkers.

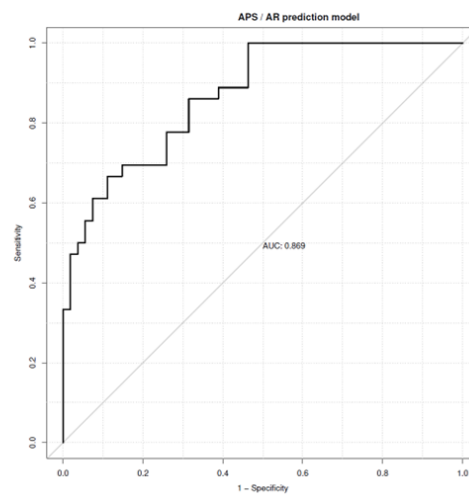
A



B



C



Supplementary Figure 8.-Evaluation of differential serum protein profiles as potentials biomarkers panel for diagnosis. Panel A.-ROC curve for AO vs APS. Panel B.-ROC curve for OA vs AR. Panel C.-ROC curve for APS vs AR.