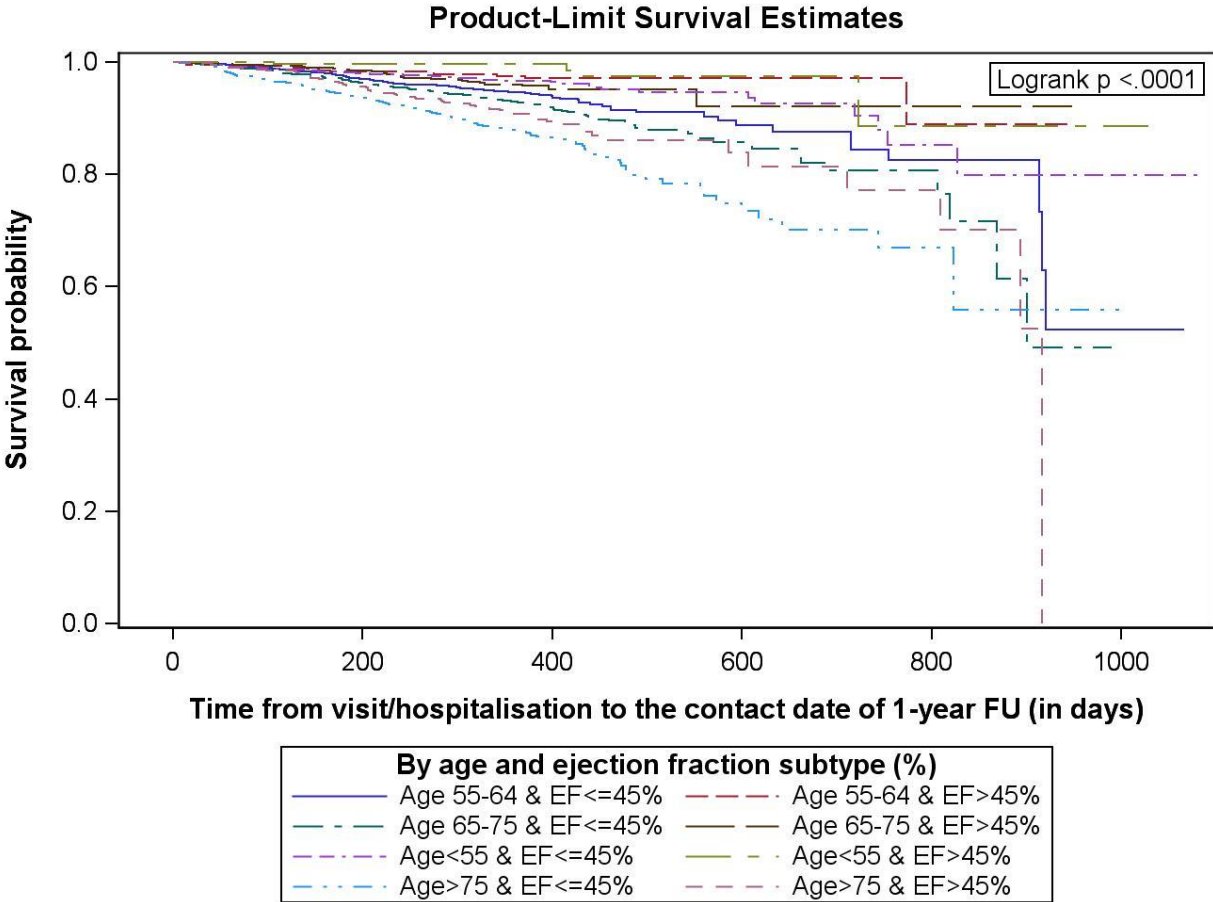


Supplementary Figure 1.3. Kaplan-Meier curves for all-cause death by age & ejection fraction subtype (%)



Supplementary Figure 1.4. Kaplan-Meier curves for all-cause hospitalization by age & ejection fraction subtype (%)

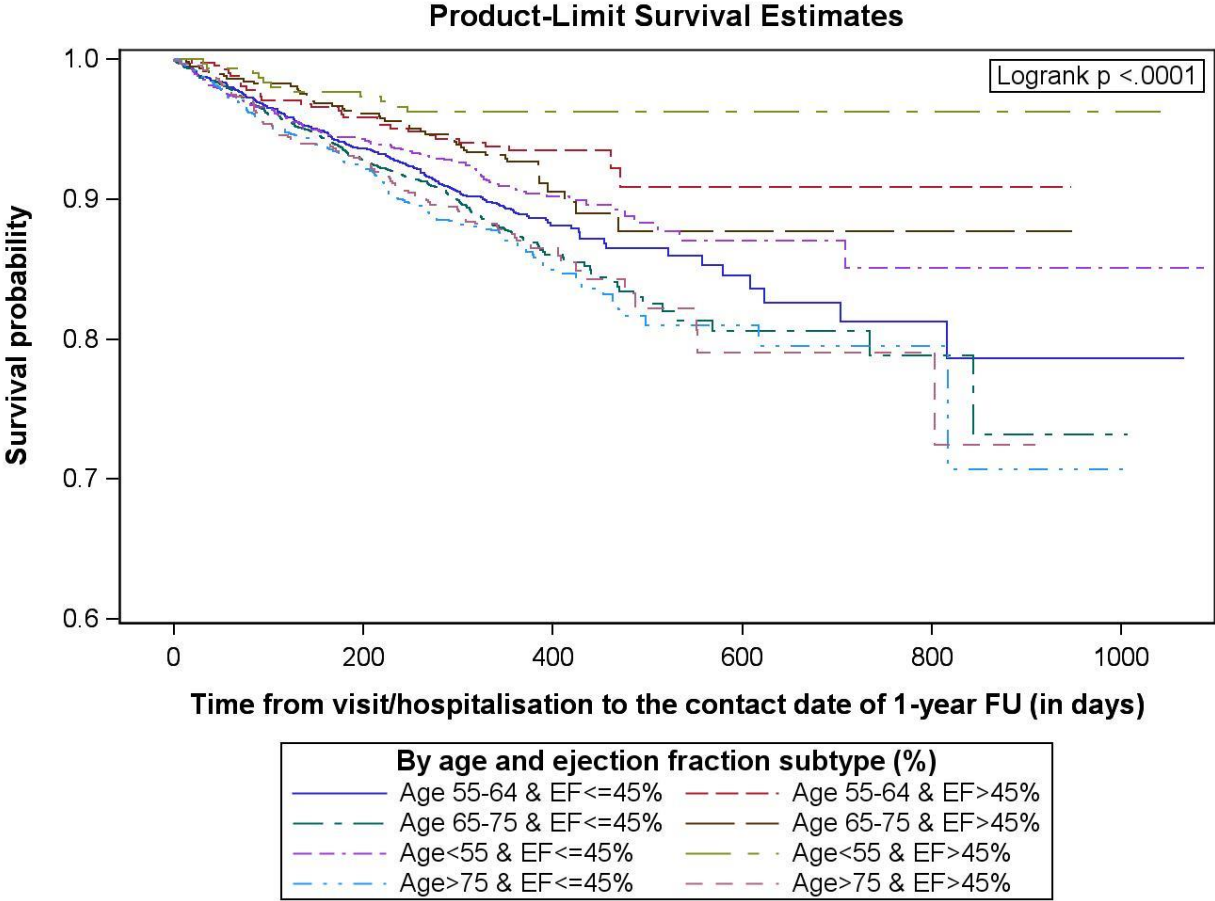


Table S1a. Baseline demographic, clinical and treatment characteristics for female patients according to age categories

Characteristics	Female					
	Female (N= 2684)	<55 (N= 456)	55-64 (N= 581)	65-75 (N= 802)	>75 (N= 845)	P-value
Age years, median [IQR]	69.0 [59.0-78.0]	45.0 [37.0-50.0]	60.0 [58.0-63.0]	70.0 [68.0-73.0]	81.0 [78.0-84.0]	<0.001
BMI (kg/m ²), mean (SD)	27.9 (5.7)	27.2 (6.0)	29.0 (6.2)	28.4 (5.6)	27.0 (5.0)	<0.001
SBP, mean (SD)	126.2 (22.2)	115.4 (19.0)	125.4 (23.0)	129.0 (22.0)	129.9 (21.6)	<0.001
SBP≤110 mmHg, n (%)	779/2683 (29.0%)	232/455 (51.0%)	178/581 (30.6%)	178/802 (22.2%)	191/845 (22.6%)	<0.001
HR (bpm), mean (SD)	75.1 (16.6)	76.6 (16.8)	75.4 (17.4)	74.3 (15.8)	74.8 (16.8)	0.067
HR≥70 bpm, n (%)	1619/2683 (60.3%)	286/456 (62.7%)	348/581 (59.9%)	479/802 (59.7%)	506/844 (60.0%)	0.728
EF (%),mean (SD)	41.8 (15.0)	39.0 (13.5)	38.8 (14.0)	41.9 (15.0)	45.4 (15.7)	<0.001
EF>45%, n (%)	850/2318 (36.7%)	104/383 (27.2%)	138/505 (27.3%)	265/711 (37.3%)	343/719 (47.7%)	<0.001
NYHA III-IV, n (%)	778/2677 (29.1%)	98/455 (21.5%)	154/580 (26.6%)	231/799 (28.9%)	295/843 (35.0%)	<0.001
Pulmonary or peripheral congestion, n (%)	907/1194 (76.0%)	126/180 (70.0%)	186/253 (73.5%)	266/354 (75.1%)	329/407 (80.8%)	0.021
Third heart sound, n (%)	137/2589 (5.3%)	32/446 (7.2%)	40/565 (7.1%)	34/775 (4.4%)	31/803 (3.9%)	0.010
Peripheral hypoperfusion/cold, n (%)	93/2594 (3.6%)	12/447 (2.7%)	22/566 (3.9%)	24/776 (3.1%)	35/805 (4.3%)	0.377
Mitral regurgitation, n (%)	714/2594 (27.5%)	107/447 (23.9%)	158/567 (27.9%)	186/776 (24.0%)	263/804 (32.7%)	<0.001
Aortic stenosis, n (%)	140/2593 (5.4%)	7/447 (1.6%)	10/566 (1.8%)	40/776 (5.2%)	83/804 (10.3%)	<0.001
Prior HF hospitalization, n (%)	1080/2670 (40.4%)	172/454 (37.9%)	223/577 (38.6%)	328/798 (41.1%)	357/841 (42.4%)	0.314

Characteristics	Female					P-value
	Female (N= 2684)	<55 (N= 456)	55-64 (N= 581)	65-75 (N= 802)	>75 (N= 845)	
HF diagnosis>12 months, n (%)	1368/2178 (62.8%)	202/336 (60.1%)	311/467 (66.6%)	425/668 (63.6%)	430/707 (60.8%)	0.152
Ischaemic aetiology, n (%)	742/2668 (27.8%)	62/456 (13.6%)	138/579 (23.8%)	240/797 (30.1%)	302/836 (36.1%)	<0.001
Atrial fibrillation, n (%)	1028/2683 (38.3%)	69/456 (15.1%)	176/580 (30.3%)	332/802 (41.4%)	451/845 (53.4%)	<0.001
Diabetes mellitus. n (%)	762/2684 (28.4%)	65/456 (14.3%)	164/581 (28.2%)	267/802 (33.3%)	266/845 (31.5%)	<0.001
PAD, n (%)	233/2594 (9.0%)	14/447 (3.1%)	35/568 (6.2%)	78/776 (10.1%)	106/803 (13.2%)	<0.001
Hypertension, n (%)	1570/2675 (58.7%)	111/456 (24.3%)	288/577 (49.9%)	528/801 (65.9%)	643/841 (76.5%)	<0.001
COPD, n (%)	232/2677 (8.7%)	25/456 (5.5%)	49/579 (8.5%)	76/800 (9.5%)	82/842 (9.7%)	0.050
Sleep apnea, n (%)	61/2536 (2.4%)	6/441 (1.4%)	16/559 (2.9%)	27/756 (3.6%)	12/780 (1.5%)	0.024
Prior Stroke/TIA, n (%)	215/2679 (8.0%)	16/456 (3.5%)	38/579 (6.6%)	61/801 (7.6%)	100/843 (11.9%)	<0.001
Renal dysfunction, n (%)	443/2683 (16.5%)	20/456 (4.4%)	78/580 (13.4%)	143/802 (17.8%)	202/845 (23.9%)	<0.001
Hepatic dysfunction, n (%)	65/2597 (2.5%)	13/447 (2.9%)	18/568 (3.2%)	17/776 (2.2%)	17/806 (2.1%)	0.541
Depression, n (%)	321/2675 (12.0%)	45/456 (9.9%)	76/579 (13.1%)	101/800 (12.6%)	99/840 (11.8%)	0.393
PM, n (%)	203/2676 (7.6%)	6/455 (1.3%)	17/578 (2.9%)	54/799 (6.8%)	126/844 (14.9%)	<0.001
ACE-I/ARBs, n (%)	1587/1968 (80.6%)	322/391 (82.4%)	350/411 (85.2%)	436/553 (78.8%)	479/613 (78.1%)	0.021
Betablockers, n (%)	2274/2682 (84.8%)	380/456 (83.3%)	497/581 (85.5%)	692/801 (86.4%)	705/844 (83.5%)	0.304

Characteristics	Female					P-value
	Female (N= 2684)	<55 (N= 456)	55-64 (N= 581)	65-75 (N= 802)	>75 (N= 845)	
MRAs, n (%)	1508/2683 (56.2%)	309/456 (67.8%)	383/581 (65.9%)	441/801 (55.1%)	375/845 (44.4%)	<0.001
Diuretics, n (%)	2255/2682 (84.1%)	326/456 (71.5%)	475/581 (81.8%)	688/800 (86.0%)	766/845 (90.7%)	<0.001
Digitalis, n (%)	632/2683 (23.6%)	97/456 (21.3%)	145/581 (25.0%)	178/801 (22.2%)	212/845 (25.1%)	0.278
Statins, n (%)	1413/2683 (52.7%)	120/456 (26.3%)	329/581 (56.6%)	477/801 (59.6%)	487/845 (57.6%)	<0.001
Antiplatelets, n (%)	1094/2683 (40.8%)	123/456 (27.0%)	234/581 (40.3%)	349/801 (43.6%)	388/845 (45.9%)	<0.001
Oral anticoagulants, n (%)	1121/2683 (41.8%)	110/456 (24.1%)	221/581 (38.0%)	356/801 (44.4%)	434/845 (51.4%)	<0.001
Amiodarone, n (%)	290/2612 (11.1%)	38/448 (8.5%)	60/569 (10.5%)	94/780 (12.1%)	98/815 (12.0%)	0.194
Ivabradine, n (%)	224/2598 (8.6%)	70/447 (15.7%)	71/569 (12.5%)	49/776 (6.3%)	34/806 (4.2%)	<0.001
Nitrates, n (%)	472/2598 (18.2%)	31/447 (6.9%)	109/569 (19.2%)	132/776 (17.0%)	200/806 (24.8%)	<0.001
Calcium channel blockers, n (%)	314/2597 (12.1%)	17/447 (3.8%)	55/568 (9.7%)	104/776 (13.4%)	138/806 (17.1%)	<0.001

ACEI=angiotensin converting enzyme inhibitor ; ARB =angiotensin receptor blocker; BMI=body mass index; COPD= chronic obstructive pulmonary disease ; EF= ejection fraction, HF=heart failure ; HR=heart rate, IQR=interquartile range ; MRAs=mineralocorticoid receptor antagonists ; NYHA = New York Heart Association; PAD : peripheral artery disease ; PM= pacemaker; SD=standard deviation; SBP = systolic blood pressure; TIA=transitory ischemic attack.

Table S1b. Baseline demographic, clinical and treatment characteristics for male patients according to age categories

Characteristics	Male					
	Male (N= 6744)	<55 (N= 1397)	55-64 (N= 1876)	65-75 (N= 2094)	>75 (N= 1377)	P-value
Age (years)						
Age years, median [IQR]	65.0 [56.0-74.0]	48.0 [41.0-51.0]	60.0 [57.0-62.0]	70.0 [67.0-72.0]	80.0 [78.0-83.0]	<0.001
BMI (kg/m ²), mean (SD)	28.2 (4.9)	28.5 (5.9)	28.9 (4.9)	28.2 (4.5)	26.8 (3.9)	<0.001
SBP, mean (SD)	123.7 (20.4)	119.9 (19.7)	123.4 (20.7)	124.8 (20.1)	126.4 (20.6)	<0.001
SBP≤110 mmHg, n (%)	2069/6744 (30.7%)	541/1397 (38.7%)	589/1876 (31.4%)	590/2094 (28.2%)	349/1377 (25.3%)	<0.001
HR (bpm), mean (SD)	72.3 (15.2)	74.8 (16.3)	72.5 (14.8)	71.6 (15.2)	70.6 (14.0)	<0.001
HR≥70 bpm, n (%)	3659/6744 (54.3%)	843/1397 (60.3%)	1032/1876 (55.0%)	1093/2094 (52.2%)	691/1377 (50.2%)	<0.001
EF (%),mean (SD)	35.3 (12.6)	34.3 (12.7)	34.1 (12.1)	35.1 (12.2)	38.5 (13.5)	<0.001
EF>45%, n (%)	1088/6097 (17.8%)	203/1260 (16.1%)	276/1729 (16.0%)	309/1905 (16.2%)	300/1203 (24.9%)	<0.001
NYHA III-IV, n (%)	1676/6726 (24.9%)	286/1394 (20.5%)	433/1875 (23.1%)	546/2087 (26.2%)	411/1370 (30.0%)	<0.001
Pulmonary or peripheral congestion, n (%)	2076/2788 (74.5%)	366/544 (67.3%)	532/747 (71.2%)	670/886 (75.6%)	508/611 (83.1%)	<0.001
Third heart sound, n (%)	411/6519 (6.3%)	111/1375 (8.1%)	120/1824 (6.6%)	118/2022 (5.8%)	62/1298 (4.8%)	0.004
Peripheral hypoperfusion/cold, n (%)	220/6529 (3.4%)	33/1375 (2.4%)	58/1827 (3.2%)	70/2027 (3.5%)	59/1300 (4.5%)	0.021
Mitral regurgitation, n (%)	1705/6533 (26.1%)	275/1378 (20.0%)	468/1830 (25.6%)	546/2027 (26.9%)	416/1298 (32.0%)	<0.001
Aortic stenosis, n (%)	233/6532 (3.6%)	18/1377 (1.3%)	34/1828 (1.9%)	66/2027 (3.3%)	115/1300 (8.8%)	<0.001
Prior HF hospitalization, n (%)	2883/6686 (43.1%)	588/1384 (42.5%)	811/1860 (43.6%)	876/2080 (42.1%)	608/1362 (44.6%)	0.468
HF diagnosis>12 months, n (%)	3469/5630 (61.6%)	654/1132 (57.8%)	987/1592 (62.0%)	1109/1760 (63.0%)	719/1146 (62.7%)	0.026

Characteristics	Male					
	Male (N= 6744)	<55 (N= 1397)	55-64 (N= 1876)	65-75 (N= 2094)	>75 (N= 1377)	P-value
Ischaemic aetiology, n (%)	3279/6704 (48.9%)	392/1390 (28.2%)	901/1865 (48.3%)	1219/2084 (58.5%)	767/1365 (56.2%)	<0.001
Atrial fibrillation, n (%)	2509/6744 (37.2%)	316/1397 (22.6%)	579/1876 (30.9%)	876/2094 (41.8%)	738/1377 (53.6%)	<0.001
Diabetes mellitus, n (%)	2178/6744 (32.3%)	262/1397 (18.8%)	654/1876 (34.9%)	824/2094 (39.4%)	438/1377 (31.8%)	<0.001
PAD, n (%)	872/6535 (13.3%)	72/1378 (5.2%)	204/1832 (11.1%)	337/2026 (16.6%)	259/1299 (19.9%)	<0.001
Hypertension, n (%)	3964/6737 (58.8%)	535/1397 (38.3%)	1068/1873 (57.0%)	1404/2093 (67.1%)	957/1374 (69.7%)	<0.001
COPD, n (%)	1090/6732 (16.2%)	126/1394 (9.0%)	287/1875 (15.3%)	397/2090 (19.0%)	280/1373 (20.4%)	<0.001
Sleep apnea, n (%)	398/6397 (6.2%)	80/1356 (5.9%)	125/1809 (6.9%)	134/1984 (6.8%)	59/1248 (4.7%)	0.059
Prior Stroke/TIA, n (%)	666/6740 (9.9%)	92/1397 (6.6%)	161/1874 (8.6%)	236/2094 (11.3%)	177/1375 (12.9%)	<0.001
Renal dysfunction, n (%)	1329/6736 (19.7%)	101/1394 (7.2%)	260/1874 (13.9%)	514/2094 (24.5%)	454/1374 (33.0%)	<0.001
Hepatic dysfunction, n (%)	255/6541 (3.9%)	61/1377 (4.4%)	76/1833 (4.1%)	74/2028 (3.6%)	44/1303 (3.4%)	0.454
Depression, n (%)	371/6712 (5.5%)	80/1389 (5.8%)	92/1870 (4.9%)	116/2085 (5.6%)	83/1368 (6.1%)	0.525
PM, n (%)	342/6723 (5.1%)	16/1392 (1.1%)	43/1869 (2.3%)	97/2086 (4.7%)	186/1376 (13.5%)	<0.001
ACE-I/ARBs, n (%)	4698/5369 (87.5%)	1050/1177 (89.2%)	1365/1499 (91.1%)	1409/1601 (88.0%)	874/1092 (80.0%)	<0.001
Betablockers, n (%)	6083/6742 (90.2%)	1266/1397 (90.6%)	1745/1874 (93.1%)	1894/2094 (90.4%)	1178/1377 (85.5%)	<0.001
MRAs, n (%)	4034/6742 (59.8%)	947/1397 (67.8%)	1211/1874 (64.6%)	1239/2094 (59.2%)	637/1377 (46.3%)	<0.001

Characteristics	Male					P-value
	Male (N= 6744)	<55 (N= 1397)	55-64 (N= 1876)	65-75 (N= 2094)	>75 (N= 1377)	
Diuretics, n (%)	5543/6742 (82.2%)	1027/1397 (73.5%)	1499/1874 (80.0%)	1773/2094 (84.7%)	1244/1377 (90.3%)	<0.001
Digitalis, n (%)	1517/6739 (22.5%)	311/1395 (22.3%)	443/1873 (23.7%)	454/2094 (21.7%)	309/1377 (22.4%)	0.519
Statins, n (%)	4277/6741 (63.4%)	638/1396 (45.7%)	1296/1874 (69.2%)	1481/2094 (70.7%)	862/1377 (62.6%)	<0.001
Antiplatelets, n (%)	3522/6741 (52.2%)	542/1396 (38.8%)	1064/1874 (56.8%)	1189/2094 (56.8%)	727/1377 (52.8%)	<0.001
Oral anticoagulants, n (%)	2883/6740 (42.8%)	490/1396 (35.1%)	750/1873 (40.0%)	976/2094 (46.6%)	667/1377 (48.4%)	<0.001
Amiodarone, n (%)	992/6591 (15.1%)	138/1380 (10.0%)	288/1842 (15.6%)	332/2040 (16.3%)	234/1329 (17.6%)	<0.001
Ivabradine, n (%)	544/6549 (8.3%)	183/1379 (13.3%)	170/1832 (9.3%)	140/2033 (6.9%)	51/1305 (3.9%)	<0.001
Nitrates, n (%)	1298/6548 (19.8%)	149/1379 (10.8%)	322/1831 (17.6%)	490/2033 (24.1%)	337/1305 (25.8%)	<0.001
Calcium channel blockers, n (%)	729/6549 (11.1%)	93/1379 (6.7%)	177/1832 (9.7%)	262/2033 (12.9%)	197/1305 (15.1%)	<0.001

ACEI=angiotensin converting enzyme inhibitor ; ARB =angiotensin receptor blocker; BMI=body mass index; COPD= chronic obstructive pulmonary disease ; EF= ejection fraction, HF=heart failure ; HR=heart rate, IQR=interquartile range ; MRAs=mineralocorticoid receptor antagonists ; NYHA = New York Heart Association; PAD : peripheral artery disease ; PM= pacemaker; SD=standard deviation; SBP = systolic blood pressure; TIA=transitory ischemic attack.

Supplementary Table 2b. Management at 1-year follow-up for female patients

Management	Female					P-value
	Female (N= 2684)	<55 (N= 456)	55-64 (N= 581)	65-75 (N= 802)	>75 (N= 845)	
ACE-I/ARBs, n (%)	1766/2107 (83.8%)	322/375 (85.9%)	399/458 (87.1%)	545/652 (83.6%)	500/622 (80.4%)	0.016
Betablockers, n (%)	1800/2108 (85.4%)	326/375 (86.9%)	407/459 (88.7%)	555/652 (85.1%)	512/622 (82.3%)	0.024
MRAs, n (%)	1183/2107 (56.1%)	249/375 (66.4%)	283/459 (61.7%)	368/652 (56.4%)	283/621 (45.6%)	<0.001
Diuretics, n (%)	1722/2109 (81.7%)	252/375 (67.2%)	343/459 (74.7%)	560/653 (85.8%)	567/622 (91.2%)	<0.001
Digitalis, n (%)	446/2108 (21.2%)	62/375 (16.5%)	103/459 (22.4%)	144/652 (22.1%)	137/622 (22.0%)	0.118
Statins, n (%)	1167/2108 (55.4%)	113/375 (30.1%)	279/459 (60.8%)	407/652 (62.4%)	368/622 (59.2%)	<0.001
Antiplatelets, n (%)	846/2107 (40.2%)	96/375 (25.6%)	186/458 (40.6%)	275/652 (42.2%)	289/622 (46.5%)	<0.001
Oral anticoagulants, n (%)	877/2108 (41.6%)	103/375 (27.5%)	174/459 (37.9%)	297/652 (45.6%)	303/622 (48.7%)	<0.001
Amiodarone, n (%)	249/2108 (11.8%)	38/375 (10.1%)	54/459 (11.8%)	80/652 (12.3%)	77/622 (12.4%)	0.720
Ivabradine, n (%)	211/2108 (10.0%)	70/375 (18.7%)	62/458 (13.5%)	44/653 (6.7%)	35/622 (5.6%)	<0.001

Management	Female					P-value
	Female (N= 2684)	<55 (N= 456)	55-64 (N= 581)	65-75 (N= 802)	>75 (N= 845)	
Nitrates, n (%)	351/2056 (17.1%)	20/367 (5.4%)	84/448 (18.8%)	94/638 (14.7%)	153/603 (25.4%)	<0.001
Calcium channel blockers, n (%)	261/2108 (12.4%)	15/375 (4.0%)	46/459 (10.0%)	90/652 (13.8%)	110/622 (17.7%)	<0.001

ACEI=angiotensin converting enzyme inhibitor; ARB = angiotensin receptor blocker;

MRAs=mineralocorticoid receptor antagonists.

Supplementary Table 2c. Management at 1-year follow-up for male patients

Management	Male					
	Male (N= 6744)	<55 (N= 1397)	55-64 (N= 1876)	65-75 (N= 2094)	>75 (N= 1377)	P-value
ACE-I/ARBs, n (%)	4727/5402 (87.5%)	1023/1150 (89.0%)	1403/1530 (91.7%)	1483/1699 (87.3%)	818/1023 (80.0%)	<0.001
Betablockers, n (%)	4874/5407 (90.1%)	1057/1150 (91.9%)	1409/1530 (92.1%)	1544/1702 (90.7%)	864/1025 (84.3%)	<0.001
MRAs, n (%)	3226/5409 (59.6%)	771/1151 (67.0%)	988/1531 (64.5%)	1000/1702 (58.8%)	467/1025 (45.6%)	<0.001
Diuretics, n (%)	4358/5409 (80.6%)	796/1151 (69.2%)	1189/1531 (77.7%)	1442/1702 (84.7%)	931/1025 (90.8%)	<0.001
Digitalis, n (%)	1137/5409 (21.0%)	229/1151 (19.9%)	316/1531 (20.6%)	357/1702 (21.0%)	235/1025 (22.9%)	0.354
Statins, n (%)	3548/5409 (65.6%)	579/1151 (50.3%)	1081/1531 (70.6%)	1237/1702 (72.7%)	651/1025 (63.5%)	<0.001
Antiplatelets, n (%)	2735/5408 (50.6%)	464/1150 (40.3%)	861/1531 (56.2%)	899/1702 (52.8%)	511/1025 (49.9%)	<0.001
Oral anticoagulants, n (%)	2386/5409 (44.1%)	390/1151 (33.9%)	629/1531 (41.1%)	842/1702 (49.5%)	525/1025 (51.2%)	<0.001
Amiodarone, n (%)	953/5409 (17.6%)	141/1151 (12.3%)	276/1531 (18.0%)	335/1702 (19.7%)	201/1025 (19.6%)	<0.001
Ivabradine, n (%)	540/5407 (10.0%)	195/1150 (17.0%)	170/1530 (11.1%)	130/1702 (7.6%)	45/1025 (4.4%)	<0.001

Management	Male					
Age (years)	Male (N= 6744)	<55 (N= 1397)	55-64 (N= 1876)	65-75 (N= 2094)	>75 (N= 1377)	P-value
Nitrates, n (%)	995/5274 (18.9%)	111/1131 (9.8%)	263/1497 (17.6%)	369/1661 (22.2%)	252/985 (25.6%)	<0.001
Calcium channel blockers, n (%)	579/5409 (10.7%)	84/1151 (7.3%)	152/1531 (9.9%)	196/1702 (11.5%)	147/1025 (14.3%)	<0.001

ACEI=angiotensin converting enzyme inhibitor; ARB angiotensin receptor blocker;

MRAs=mineralocorticoid receptor antagonists.

Supplementary Table 4b. 1-year Outcomes - Female and Male

Age (years)	Female (N= 2684)	<55 (N= 456)	55-64 (N= 581)	65-75 (N= 802)	>75 (N= 845)	P-value
all-cause death, n (%)	186/2613 (7.1%)	19/446 (4.3%)	30/567 (5.3%)	47/777 (6.0%)	90/823 (10.9%)	<0.001
Causes of death						
CV death, n (%)	102/186 (54.8%)	7/19 (36.8%)	18/30 (60.0%)	25/47 (53.2%)	52/90 (57.8%)	0.572
Non-CV death, n (%)	38/186 (20.4%)	5/19 (26.3%)	7/30 (23.3%)	8/47 (17.0%)	18/90 (20.0%)	
Unknown, n (%)	46/186 (24.7%)	7/19 (36.8%)	5/30 (16.7%)	14/47 (29.8%)	20/90 (22.2%)	
all-cause hospitalisation, n (%)	571/2613 (21.9%)	73/446 (16.4%)	118/567 (20.8%)	178/777 (22.9%)	202/823 (24.5%)	0.007
HF hospitalisation, n (%)	257/2364 (10.9%)	30/409 (7.3%)	53/520 (10.2%)	75/713 (10.5%)	99/722 (13.7%)	0.009
Age (years)	Male (N= 6744)	<55 (N= 1397)	55-64 (N= 1876)	65-75 (N= 2094)	>75 (N= 1377)	P-value
all-cause death, n (%)	571/6585 (8.7%)	59/1349 (4.4%)	121/1827 (6.6%)	183/2062 (8.9%)	208/1347 (15.4%)	<0.001
Causes of death						

Age (years)	Female (N= 2684)	<55 (N= 456)	55-64 (N= 581)	65-75 (N= 802)	>75 (N= 845)	P-value
CV death, n (%)	292/571 (51.1%)	38/59 (64.4%)	59/121 (48.8%)	97/183 (53.0%)	98/208 (47.1%)	0.107
Non-CV death, n (%)	137/571 (24.0%)	6/59 (10.2%)	28/121 (23.1%)	43/183 (23.5%)	60/208 (28.8%)	
Unknown, n (%)	142/571 (24.9%)	15/59 (25.4%)	34/121 (28.1%)	43/183 (23.5%)	50/208 (24.0%)	
all-cause hospitalisation, n (%)	1796/6585 (27.3%)	341/1349 (25.3%)	459/1827 (25.1%)	611/2062 (29.6%)	385/1347 (28.6%)	0.003
HF hospitalisation, n (%)	773/5993 (12.9%)	128/1257 (10.2%)	200/1670 (12.0%)	264/1892 (14.0%)	181/1174 (15.4%)	<0.001

CV= cardiovascular ; HF=heart failure