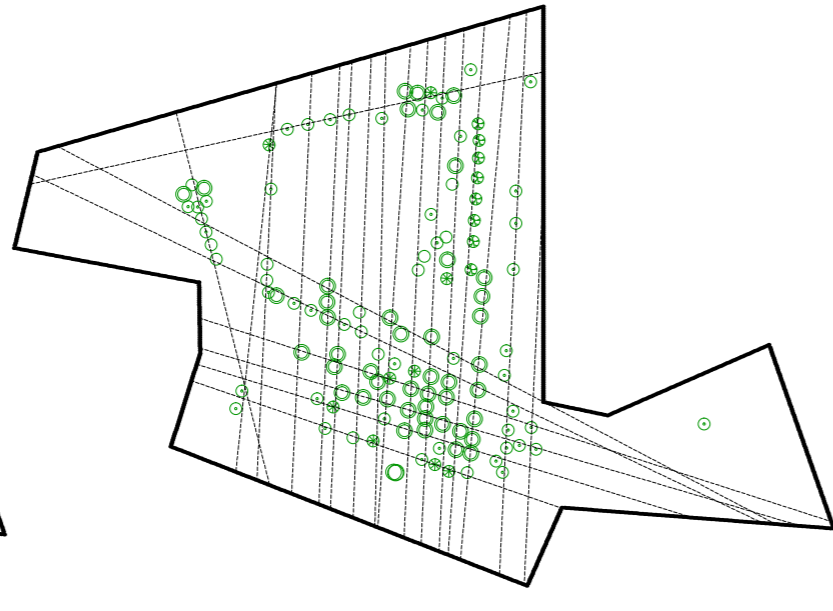
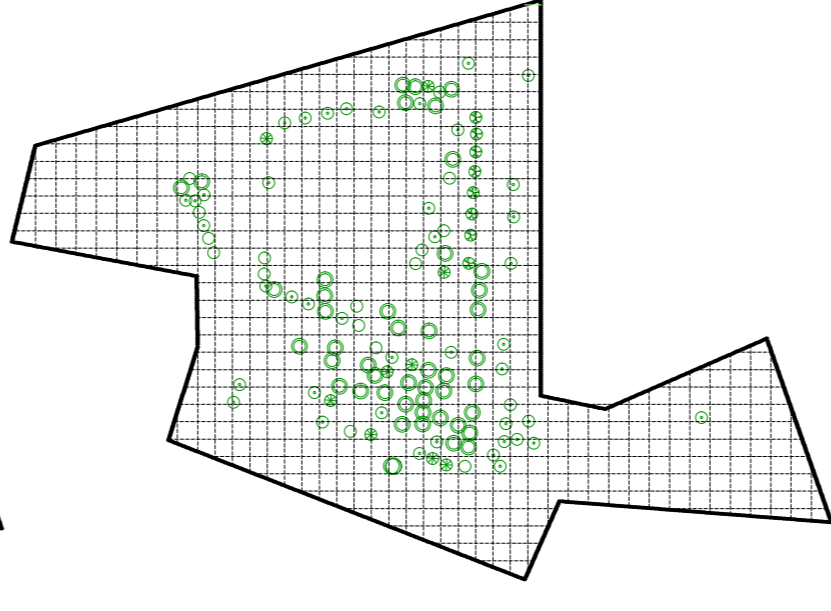


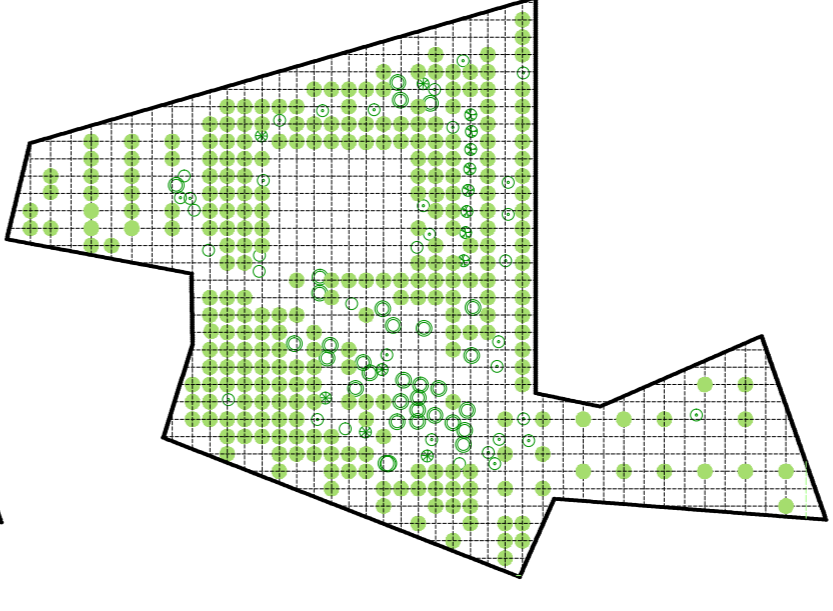
Árbores existentes no campo da feira



Xeometrías subcentricas



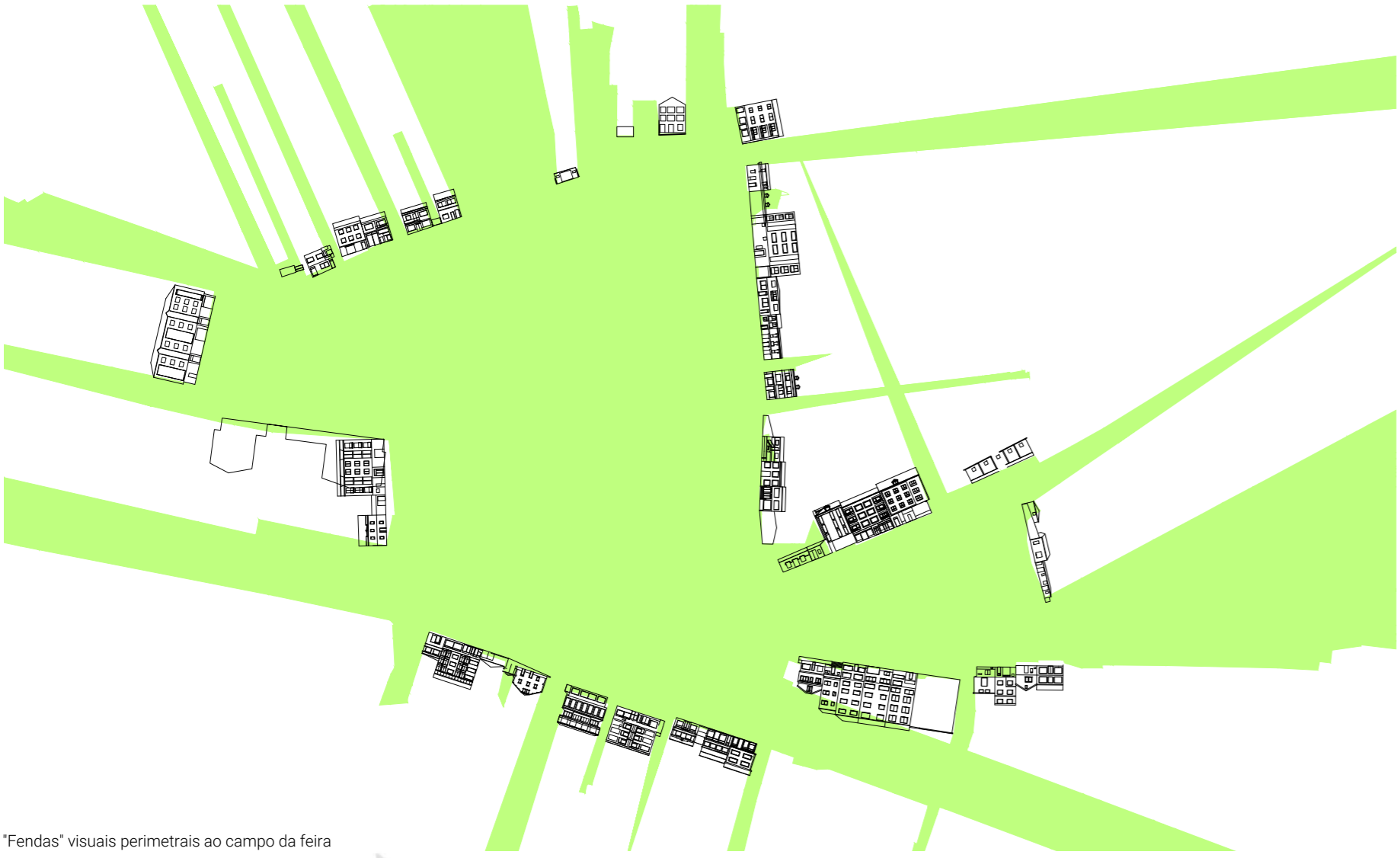
Orde integradora (6x6)



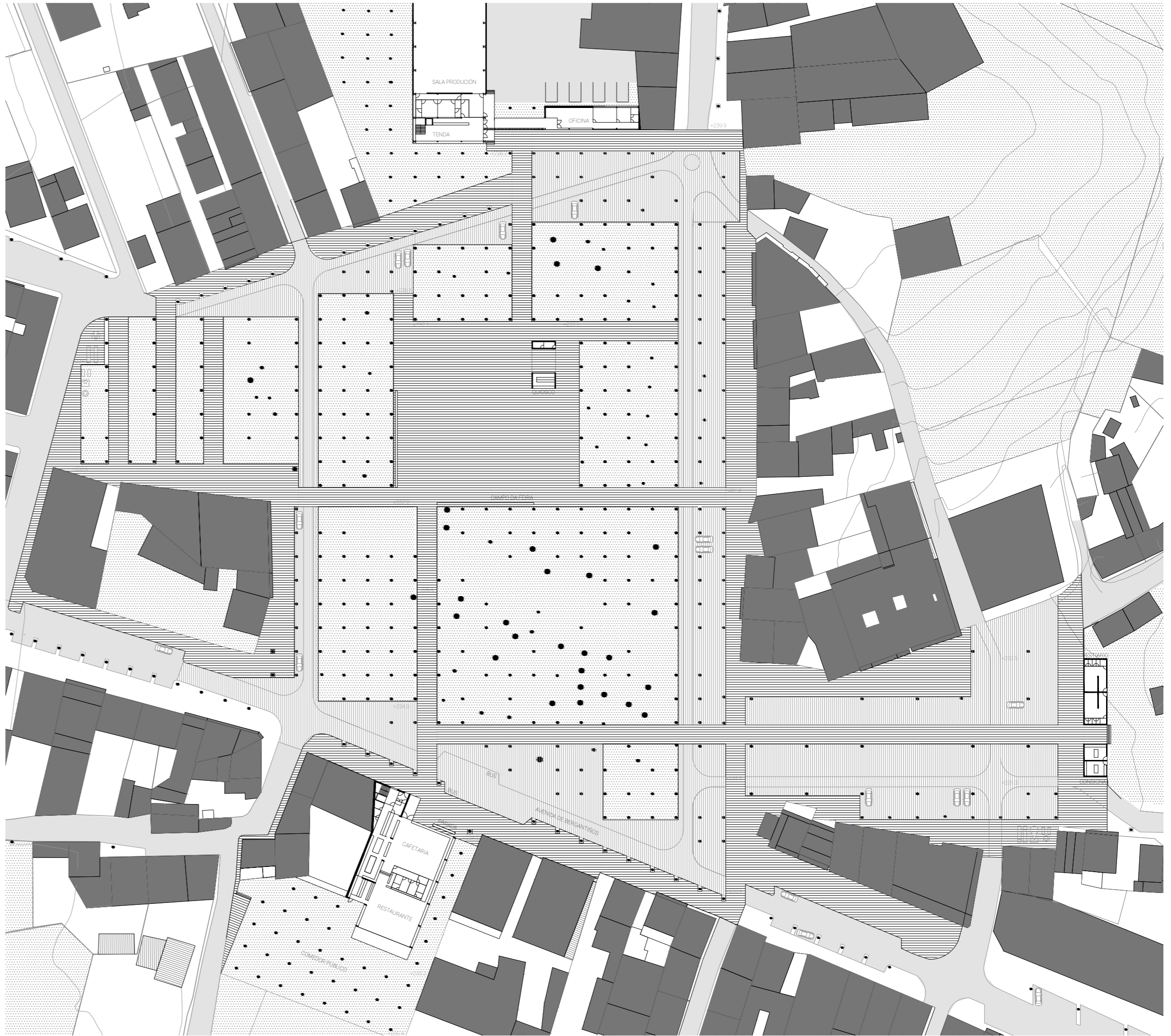
Completese a trama



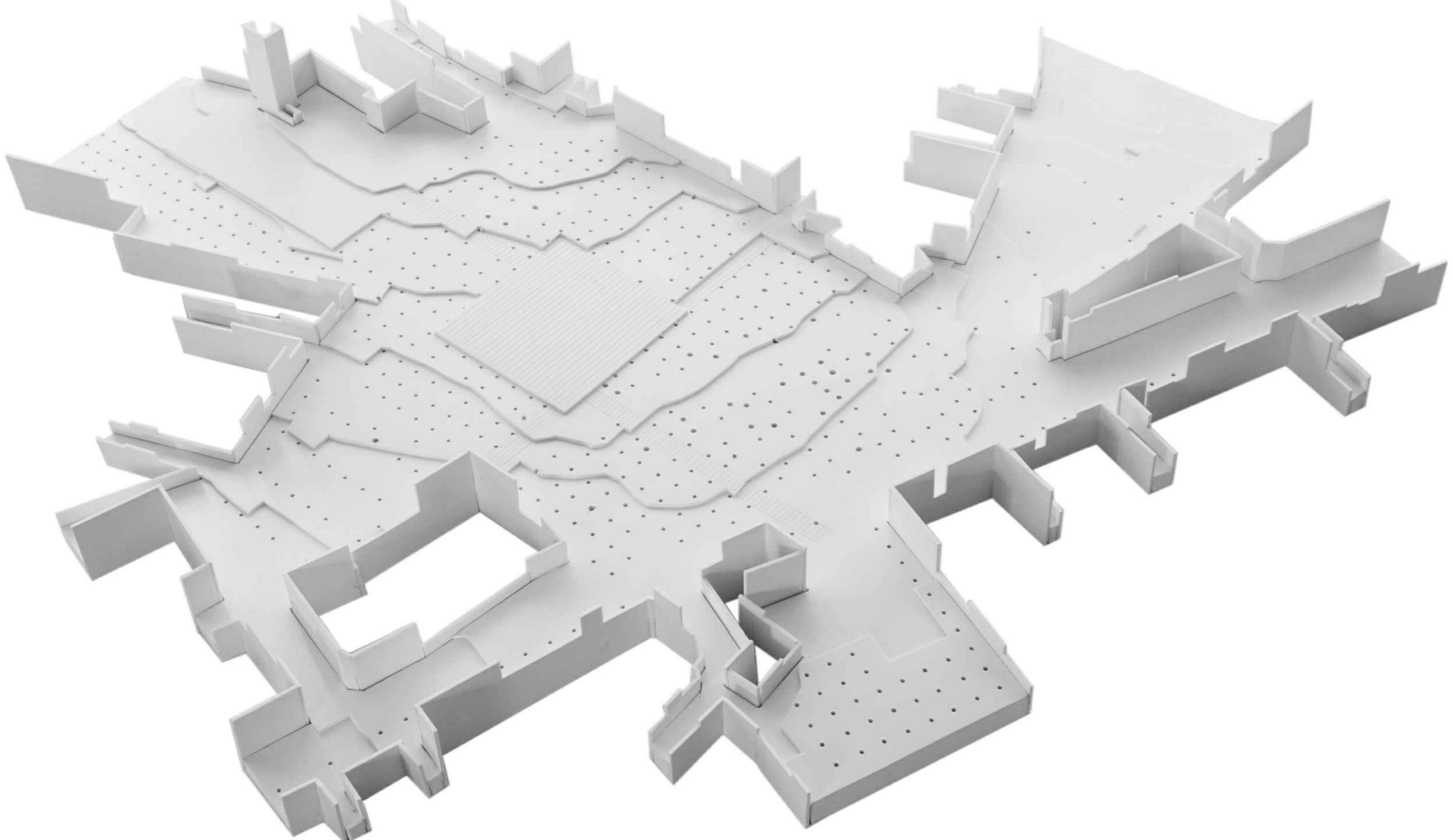
Pepe de Peña, situado a unhas poucas metros do campo da feira, 1967



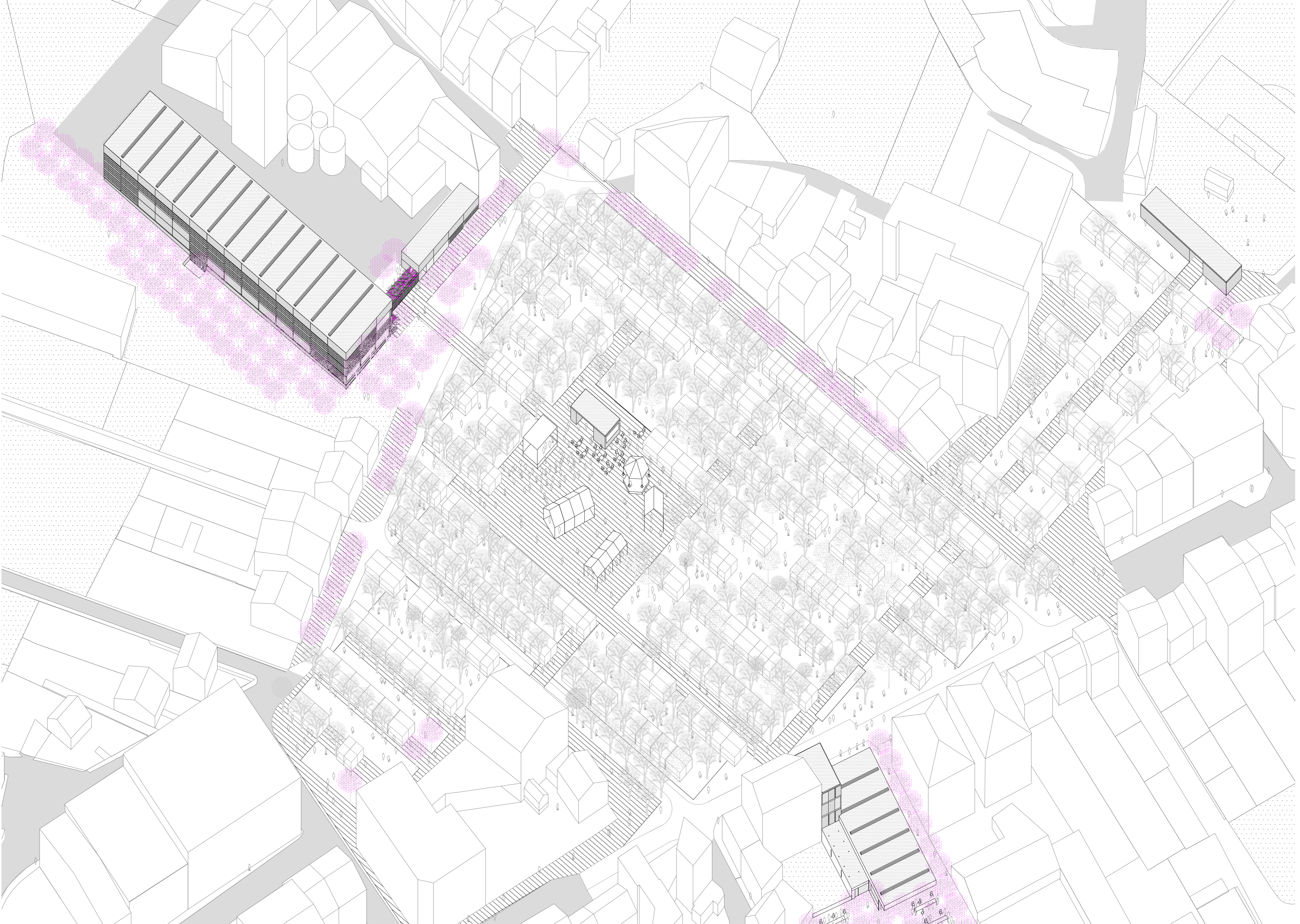
"Fendas" visuais perimetrais ao campo da feira



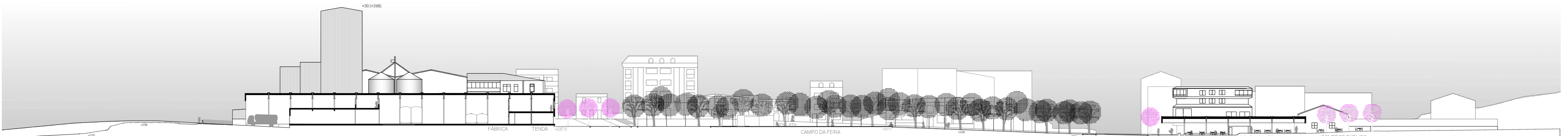
Plano de pavimentos e troncos



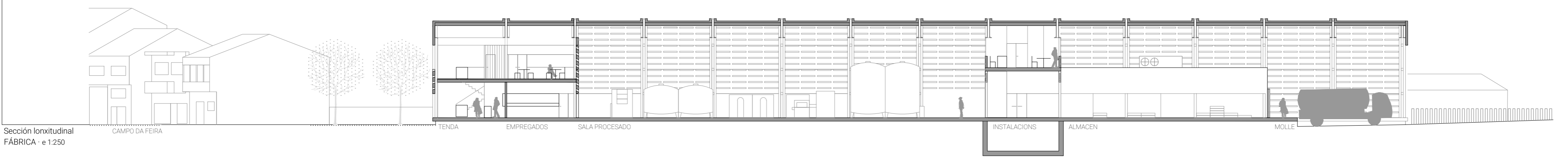
Modificación da topografía para definir o balneario horizontal



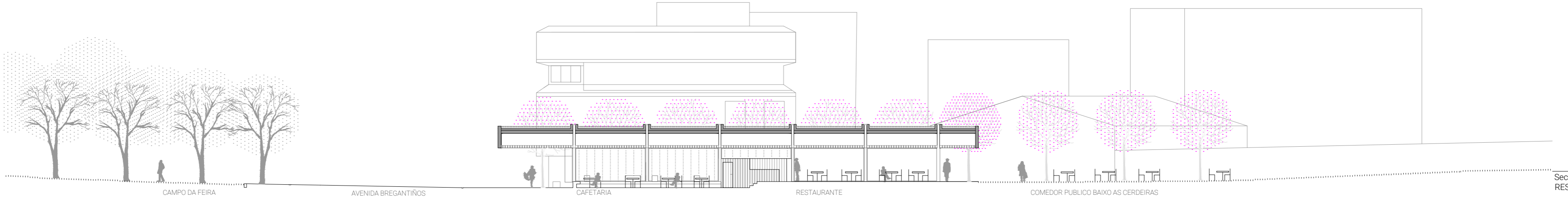
Axonometría do campo da feira un día de feira



Sección urbana · e 1:750



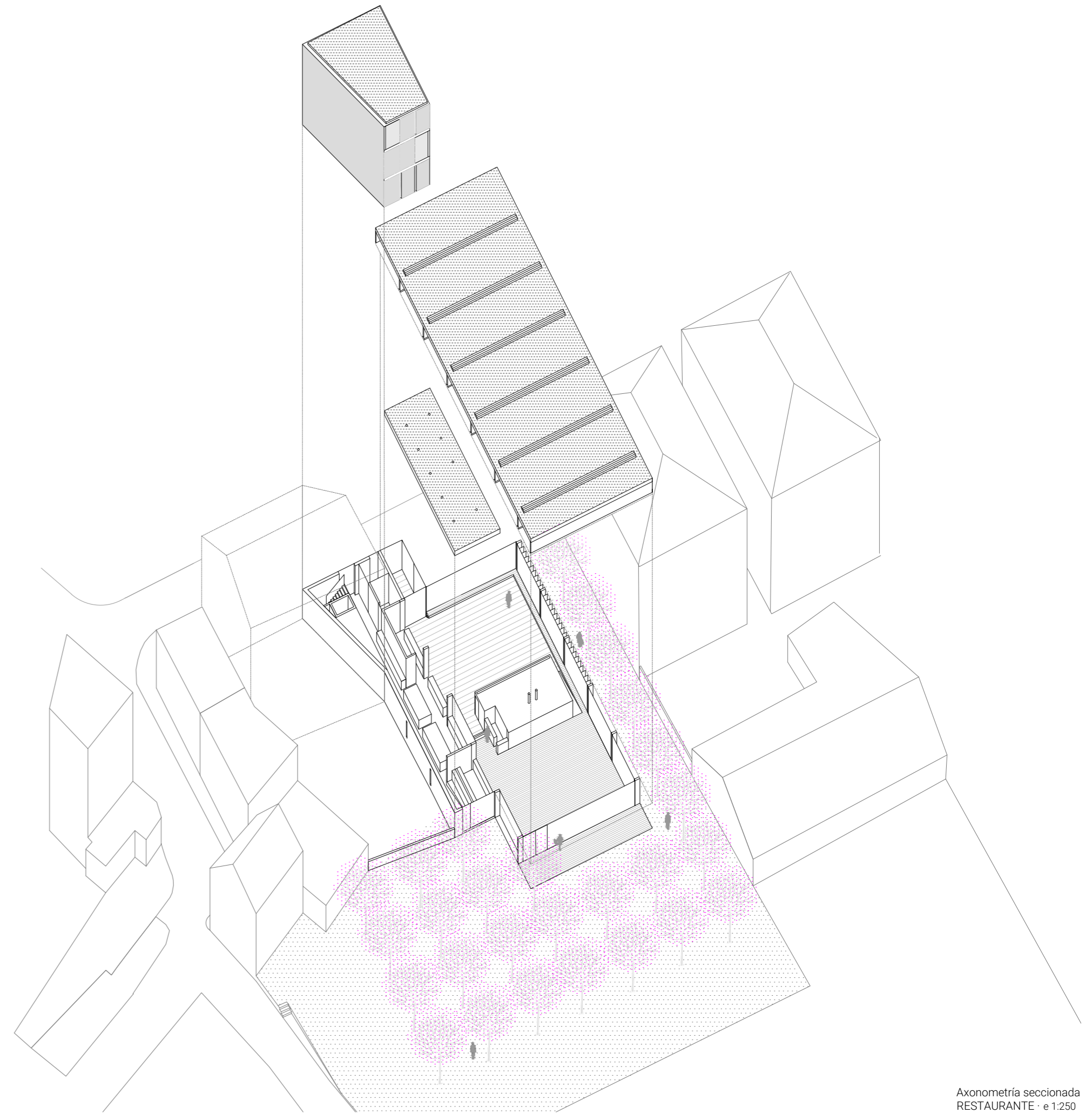
Sección longitudinal
FABRICA · e 1:250



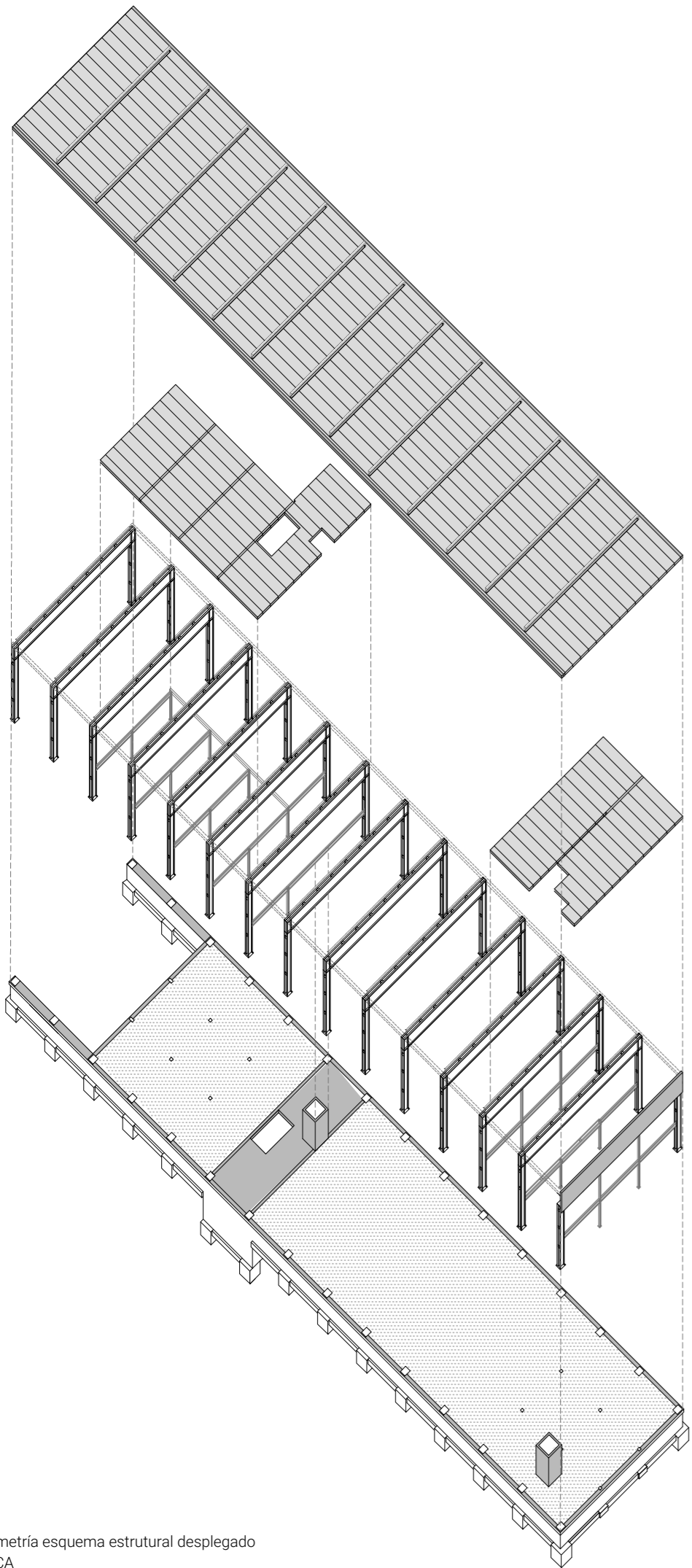
Sección longitudinal
RESTAURANTE · e 1:250



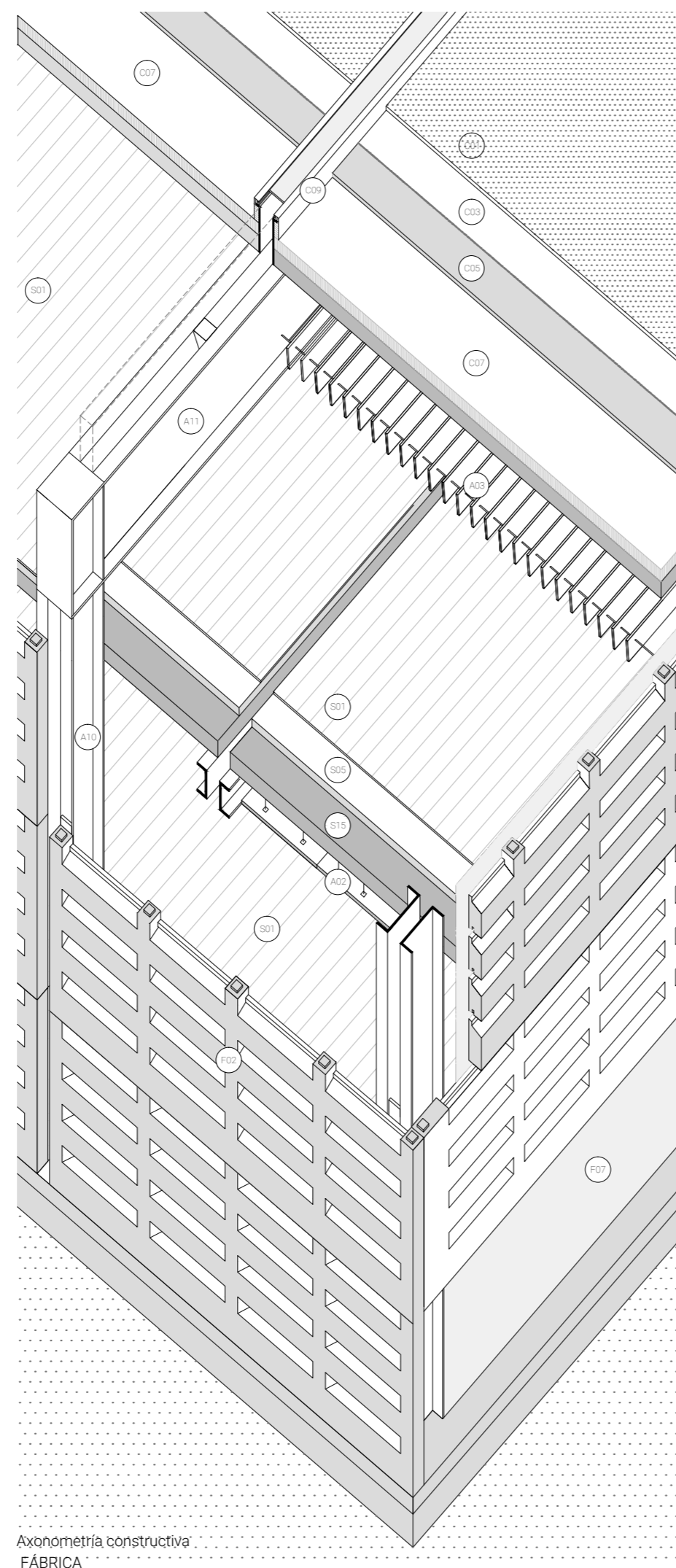
Axonometría seccionada
FABRICA · e 1:250



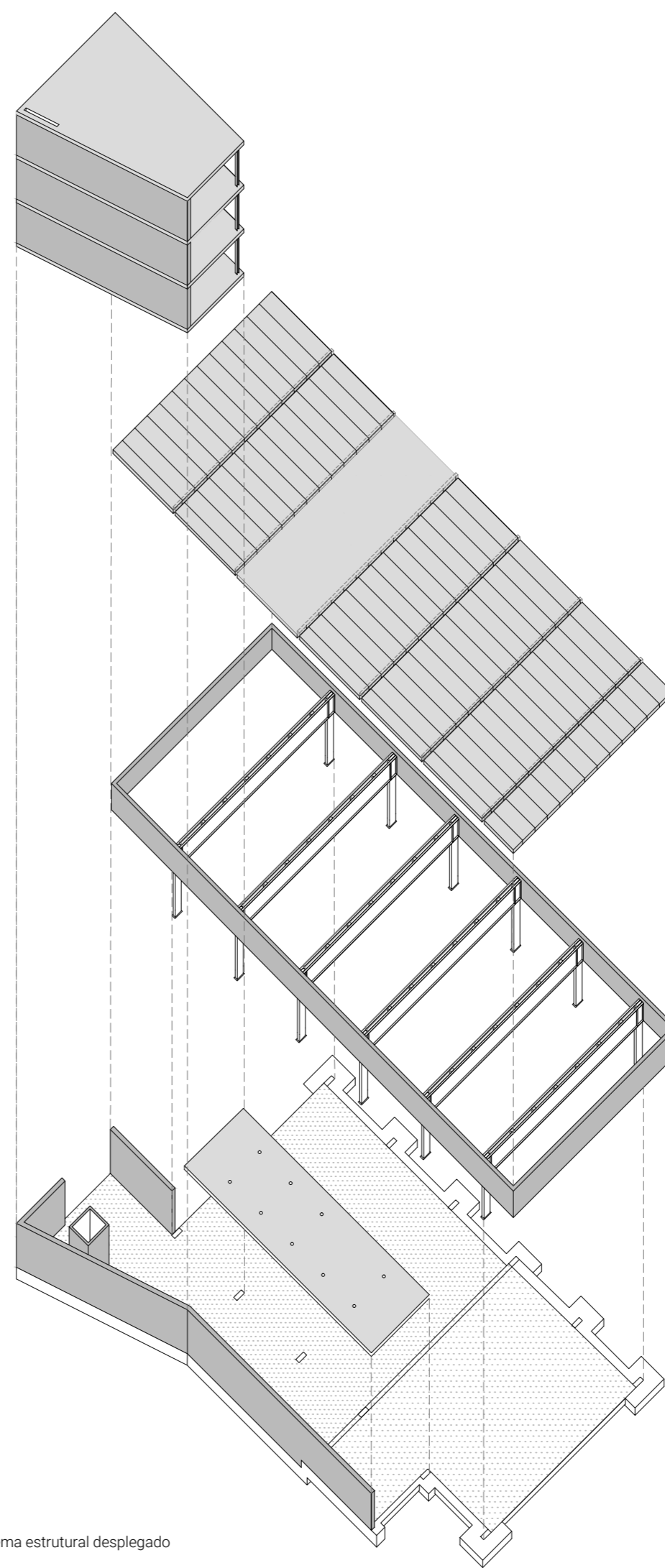
Axonometría seccionada
RESTAURANTE · e 1:250



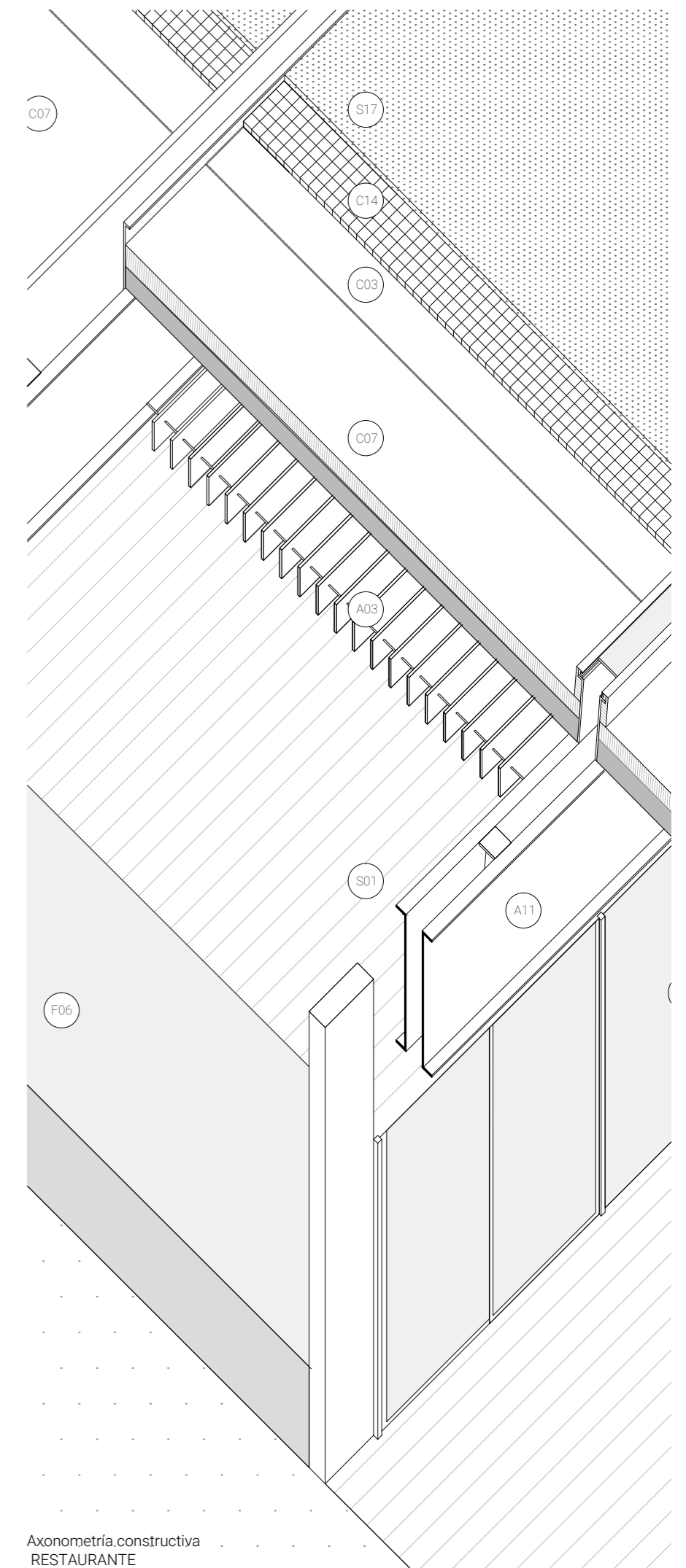
Axonometría esquema estructural desplegado
FABRICA



Axonometría constructiva
FABRICA



Axonometría esquema estructural desplegado
RESTAURANTE



Axonometría constructiva
RESTAURANTE