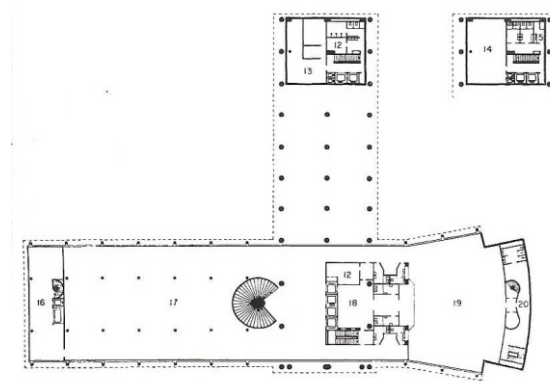
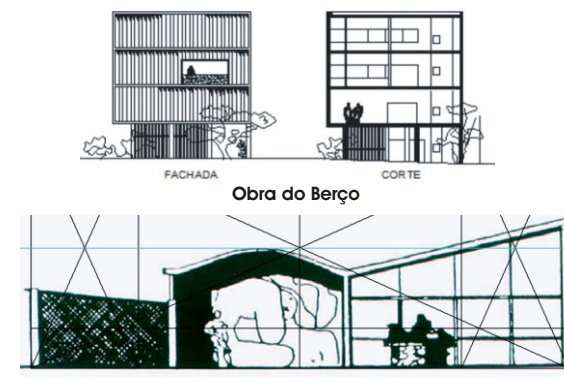


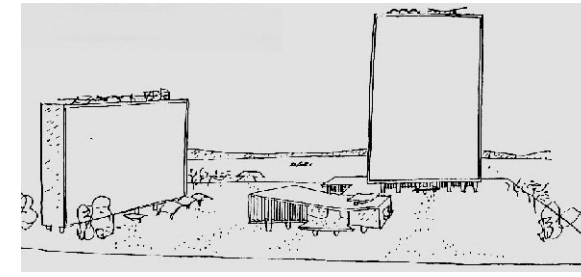
1. Edifícios Regulares



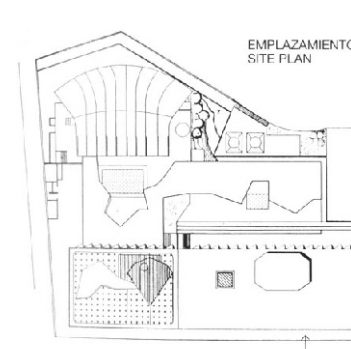
Ministério da educação e da saúde.



Casa Oswald de Andrade.



Edifício da ONU - NY.

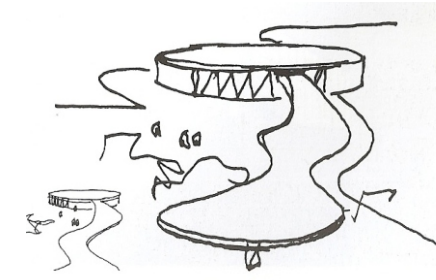


Prédio da Rede Manchete - RJ.

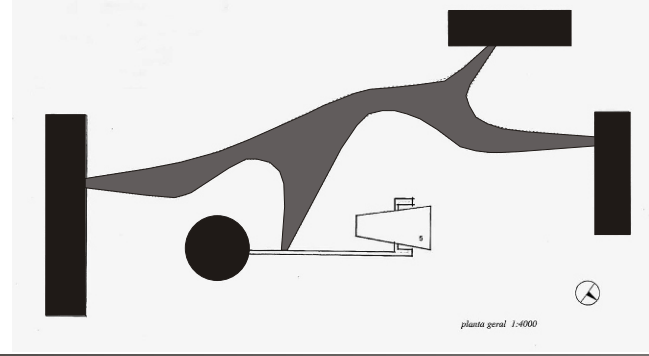


Hotel Nacional - RJ.

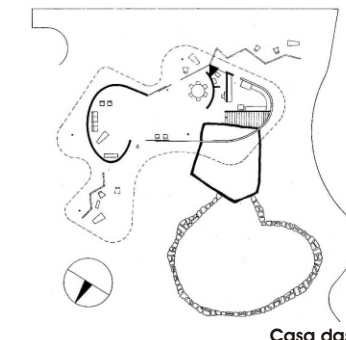
2. Marquises



Sala de Baile - Pampulha.



Marquise do Ibirapuera - SP.



Casa das Canoas - RJ.



Marquise do Hotel Nacional - RJ.

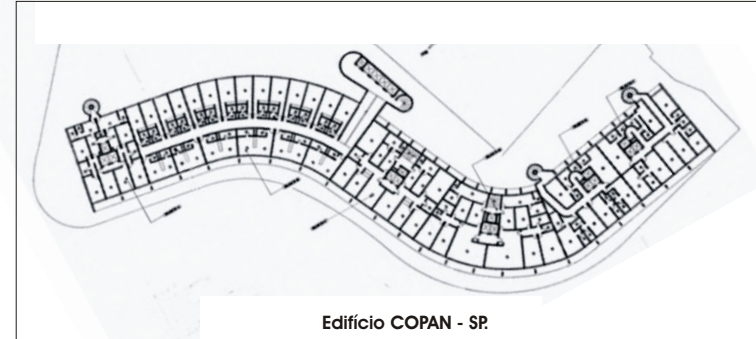
3. Superfícies que oscilam



Igreja de São Francisco - Pampulha.



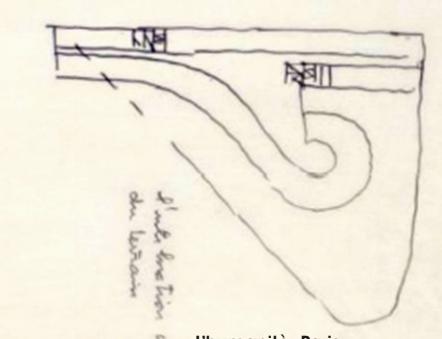
Edifício COPAN - SP.



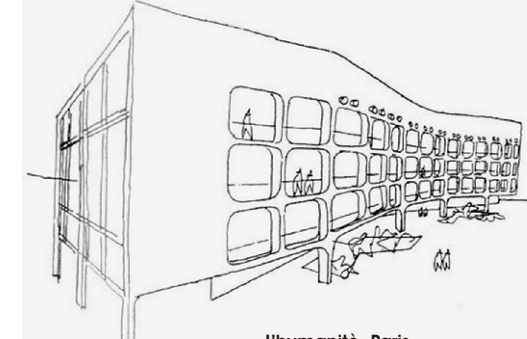
Edifício COPAN - SP.



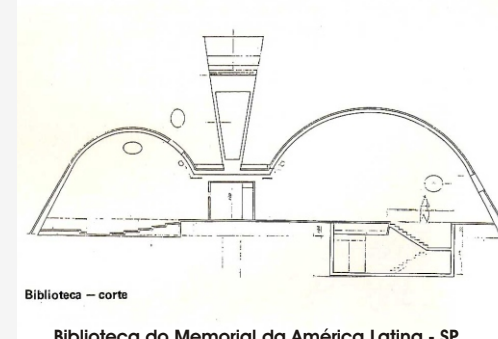
Banco Boa Vista - RJ.



L'humanité - Paris.



L'humanité - Paris.

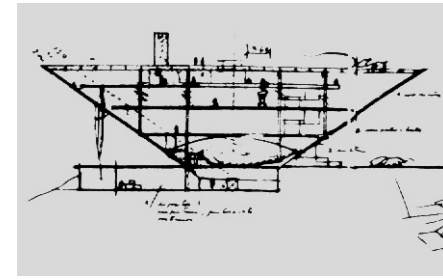


Biblioteca do Memorial da América Latina - SP.

4. Sólidos



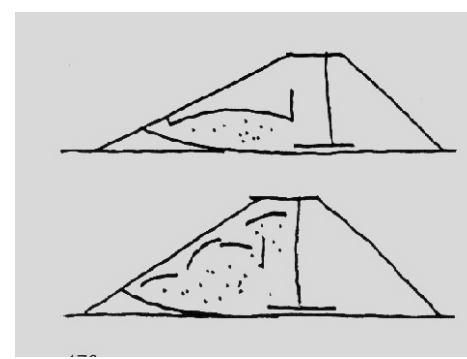
Museu de Caracas.



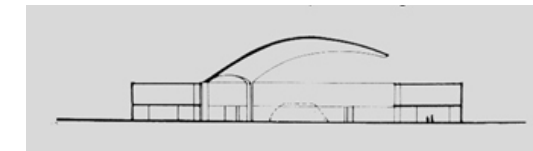
Museu de Caracas.



OCA do Ibirapuera - SP.



Sede do Partido comunista Francês - Paris.

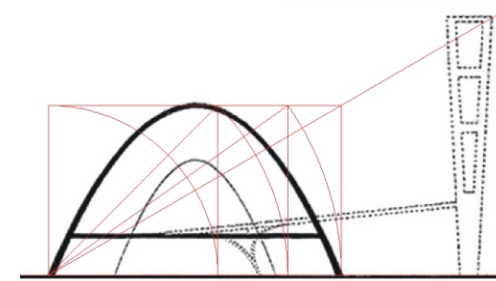


Museu do Índio - Brasília.



Sala de Exposição do Memorial da América Latina - SP.

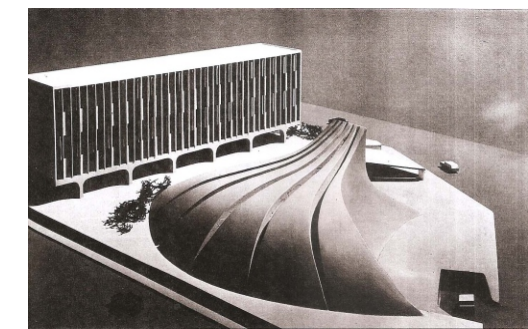
5. Cúpulas



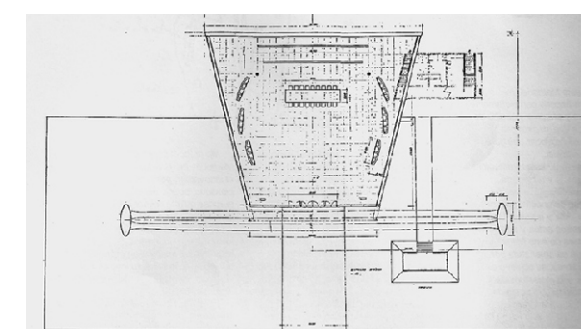
Igreja de São Francisco - Pampulha.



Bolsa de Trabalho de Bobigny - Paris.



Bolsa de Trabalho de Bobigny - Paris.

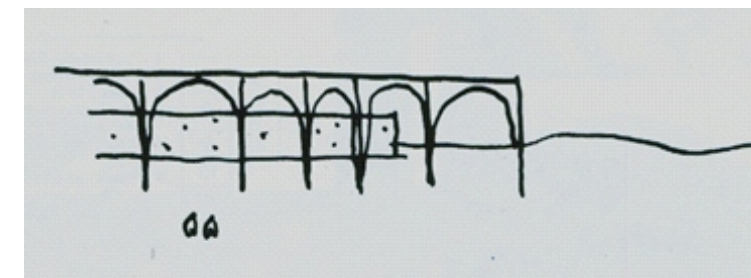


Sala do Memorial da América Latina - SP.

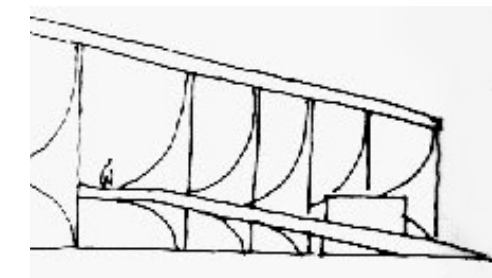


Memorial Prestes - Porto Alegre - Brasil.

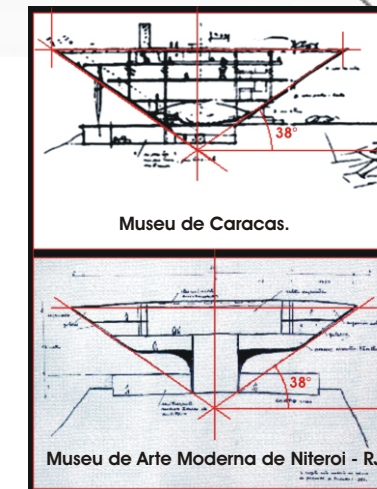
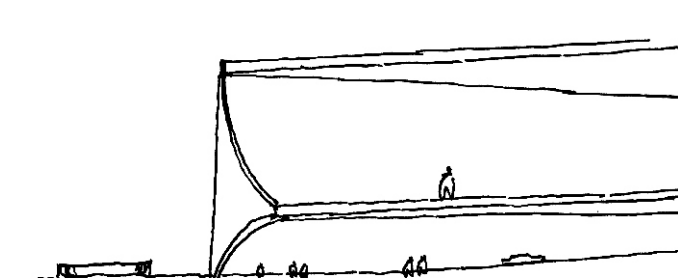
6. Colunas e Arcos



Sede da Editora Mondadori de Milão.



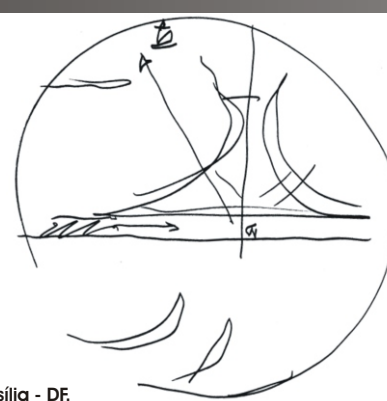
Palácios de Brasília - DF - BRASIL.



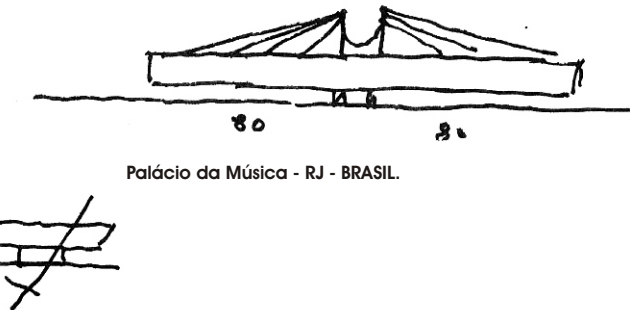
Museu de Caracas.

Museu de Arte Moderna de Niteroi - RJ.

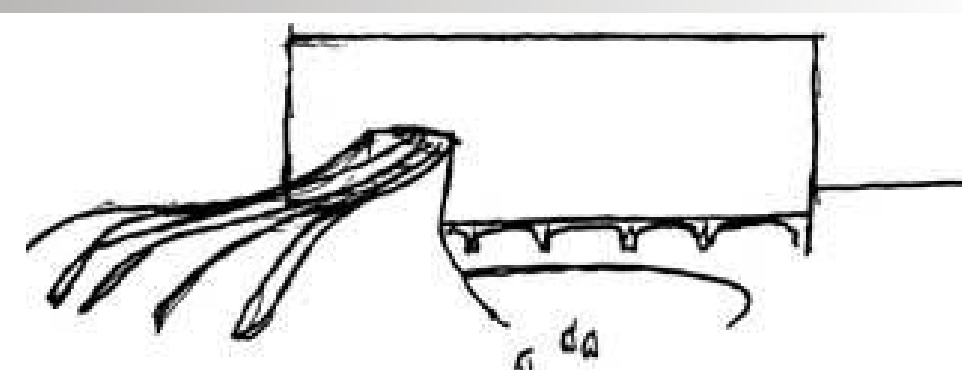
7. Mímesis de Formas Naturais e irregulares



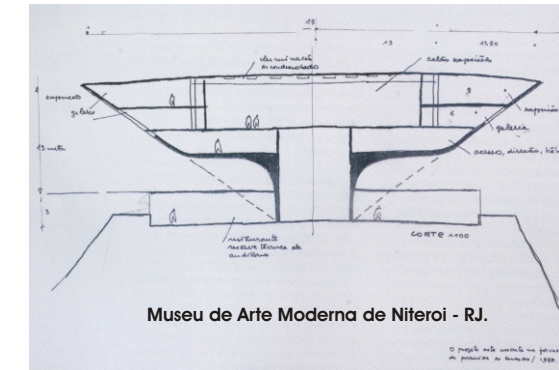
Catedral de Brasília - Brasília - DF.



Palácio da Música - RJ - BRASIL.



Bolsa de Trabalho de Bobigny - Paris.



Museu de Arte Moderna de Niteroi - RJ.

Primeira abordagem quanto ao método intuitivo em Oscar Niemeyer

A ANALÍTICA DA AUTO CITAÇÃO

Luiz Carlos Zubaran
Diretor de Tese Juan Manuel Franco Taboada

Tipos de Racionalidade na
Arquitetura Moderna