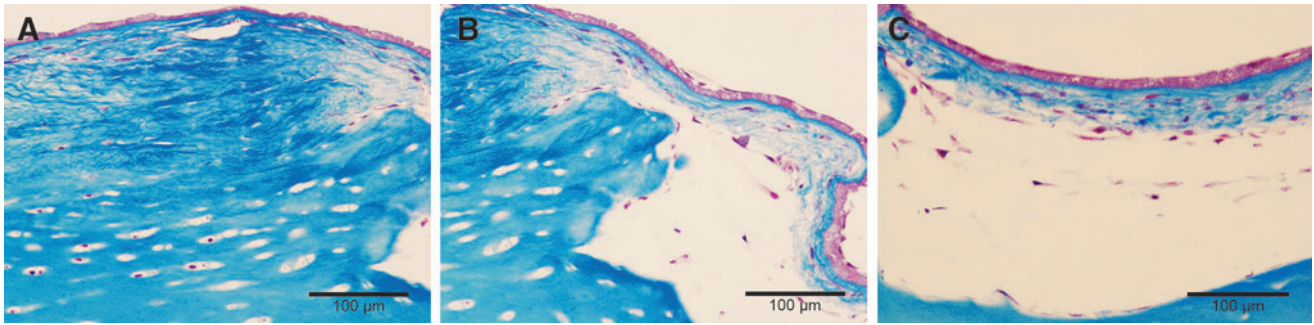


Supplementary Data



SUPPLEMENTARY FIG. S1. *In vitro* cartilage repair model without cell pellet. (A) Chondrocytes seeded on the membrane have perfectly integrated with the superficial layer of the native cartilage. (B, C) After 8 weeks in culture, cells in the membrane without the pellet in the lesion were not able to fill the injured zone. MT, Masson's trichrome staining. Scale bar: 100 μm.